



2023 Teknik Katalog

İçindekiler

Hücreli Fanlar

Say-S Serisi	7
Say-K Serisi	8
MEF Serisi	9

Isı ve Enerji Geri Kazanım Cihazları

SHRV Serisi	11
SHRV-P Serisi	12
Kanal Tipi Elektrikli Isıtıcı	13

Kanal ve Sığınak Fanları

Say-T Serisi	15
SDKF Serisi	16
SRD Serisi	18
SRDX Serisi	20
SHS Serisi	21

Aksiyal Fanlar

KTA Serisi	23
DKA Serisi	25
SAJF Serisi	27

Çatı Fanları

CTF Serisi	29
CTFP Serisi	30
CTFV Serisi	31

Tek Emiřli Radyal Fanlar [Alçak Basınç]

ADR Serisi	33
SDR Serisi	34
KDR Serisi	35
GDR Serisi	36
GDRK Serisi	37

Tek Emiřli Radyal Fanlar [Orta Basınç]

FD Serisi	39
FDL Serisi	40
TDR Serisi	41
TDL Serisi	42
ODR Serisi	43

Tek Emiřli Radyal Fanlar [Yüksek Basınç]

TFC Serisi	45
TFL Serisi	46
TFR Serisi	47
YDR Serisi	48

Opsiyonlar

Frekans Konventörü	50
Elektrik Panosu	51

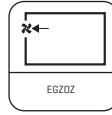
Say-S Serisi

Öne Eğimli Çift Emişli Kayış Kasnaklı Radyal Fanlar



TSEK

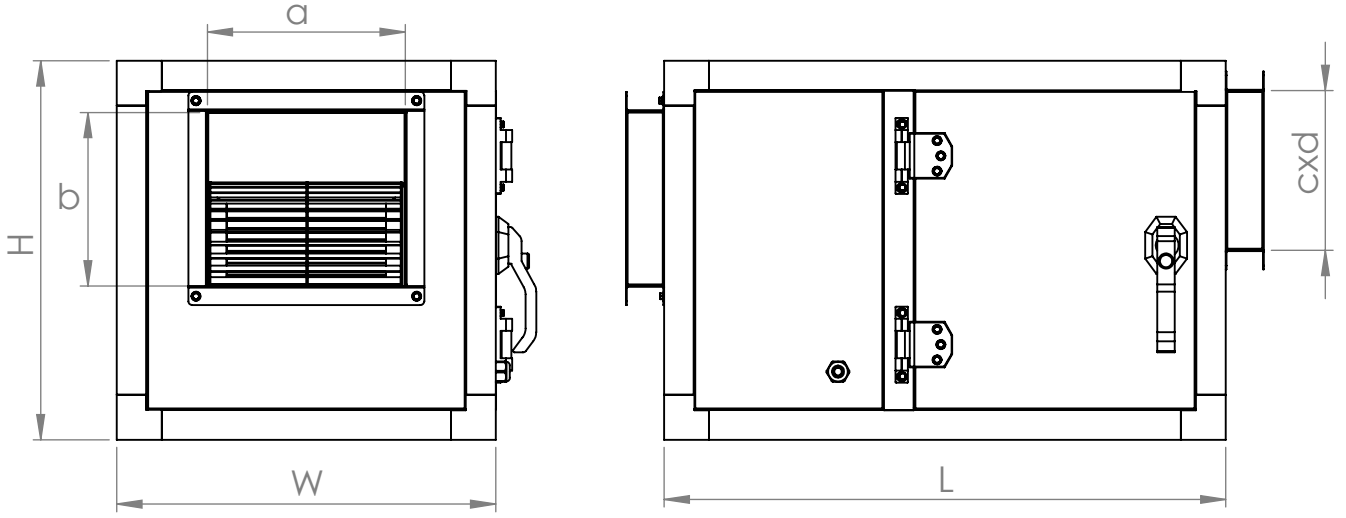
CE



MOTOR YALITIM SINIFI	F
MOTOR KORUMA SINIFI	IP55
MOTOR VERİM SINIFI	IE3
MOTOR TİPİ	TEFC
MOTOR MARKASI	GAMAK
GÖVDE MALZEMESİ	GALVANİZE SAC
PERVANE MALZEMESİ	GALVANİZE SAC
GÖREV DÖNGÜSÜ	IEC Duty Cycle - S1
ÇALIŞMA SICAKLIĞI	- 20° - + 50°
STANDARTLAR	IEC - 60335-2-80,ISO190040-1

Model [Kod]	Motor Gücü [kW]	Frekans [Hz]	Voltaj [V]	Debi [m ³ /h]	Basınç [mmSS]	Birim Fiyatı [€]
SAYS - 7/7	0,75	50	380	2500	25	
SAYS - 7/7	1,1	50	380	3400	25	
SAYS - 9/9	1,1	50	380	4500	25	
SAYS - 9/9	1,5	50	380	5000	25	
SAYS - 10/10	1,5	50	380	6000	25	
SAYS - 10/10	2,2	50	380	7000	25	
SAYS - 12/12	2,2	50	380	8400	25	
SAYS - 12/12	3	50	380	9500	25	
SAYS - 15/15	3	50	380	12000	25	
SAYS - 15/15	4	50	380	14000	25	
SAYS - 15/15 LK	5,5	50	380	15000	25	
SAYS - 18/18	5,5	50	380	18000	35	
SAYS - 18/18	7,5	50	380	20000	35	
SAYS - 18/18 LK	11	50	380	25000	35	
SAYS - 500	11	50	380	30000	30	
SAYS - 560	11	50	380	35000	30	
SAYS - 630	15	50	380	40000	45	
SAYS - 630 K	22	50	380	50000	45	

* Ölçüler mm cinsindedir.



Model	W	L	H	axb	cxd
SAY-S-7/7	500	740	500	260x230	230x415
SAY-S-9/9	700	800	600	263x293	320x615
SAY-S-10/10	700	900	700	290x330	330x615
SAY-S-12/12	800	1000	800	400x340	380x715
SAY-S-15/15	900	1100	900	405x470	430x815
SAY-S-18/18	1040	1380	1040	560x480	460x955
SAY-S-500	1400	1540	1240	630x630	600x1315
SAY-S-560	1500	1740	1400	710x710	600x1415
SAY-S-630	1600	2040	1500	800x800	640x1515
SAY-S-630 K	1600	2040	1500	800x800	640x1515

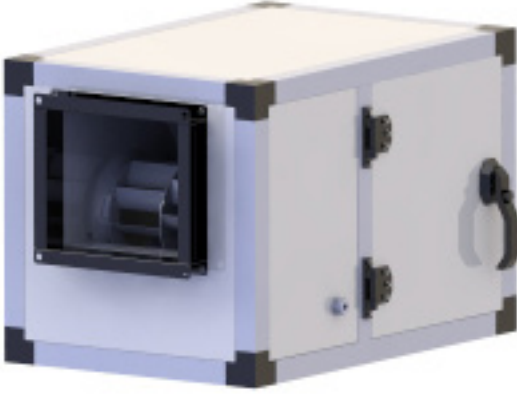
* Ölçülere Şase / Ayak Yükseklikleri Dahil Değildir.

* İstenmesi Durumunda Şase 15 cm, Ayak Yükseklikleri 10 cm'dir

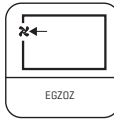
* Ölçüler mm cinsindedir.

Say-K Serisi

Geriye Eğimli Çift Emişli Kayış Kasnaklı Radyal Fanlar



TSEK

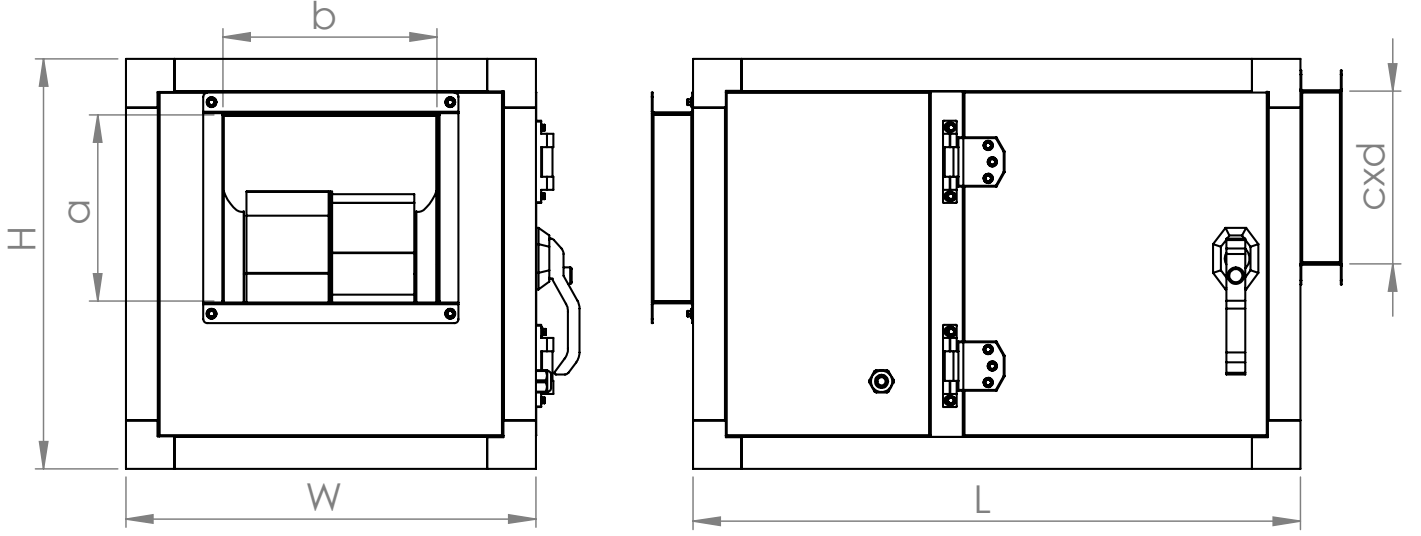


MOTOR YALITIM SINIFI	F
MOTOR KORUMA SINIFI	IP55
MOTOR VERİM SINIFI	IE3
MOTOR TİPİ	TEFC
MOTOR MARKASI	GAMAK
GÖVDE MALZEMESİ	GALVANİZE SAC
PERVANE MALZEMESİ	GALVANİZE SAC
GÖREV DÖNGÜSÜ	IEC Duty Cycle - S1
ÇALIŞMA SICAKLIĞI	- 20° - + 50°
STANDARTLAR	IEC - 60335-2-80,ISO190040-1

Model [Kod]	Motor Gücü [kW]	Frekans [Hz]	Voltaj [V]	Debi [m ³ /h]	Basınç [mmSS]	Birim Fiyatı [€]
SAYK - 225	0,55	50	380	2500	25	
SAYK - 250	1,1	50	380	4000	25	
SAYK - 280	1,5	50	380	6000	25	
SAYK - 280	3	50	380	7500	25	
SAYK - 315	3	50	380	9500	25	
SAYK - 355	4	50	380	12000	25	
SAYK - 400	4	50	380	14000	25	
SAYK - 400	5,5	50	380	16000	25	
SAYK - 450	5,5	50	380	18000	35	
SAYK - 450	7,5	50	380	20000	40	
SAYK - 500	11	50	380	25000	50	
SAYK - 560	11	50	380	30000	45	
SAYK - 560	15	50	380	35000	45	
SAYK - 630	15	50	380	40000	40	
SAYK - 630 K	22	50	380	47000	35	

* Ölçüler mm cinsindedir.

TEKNİK RESİM

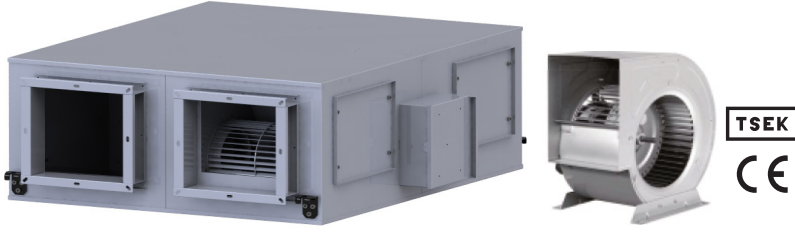
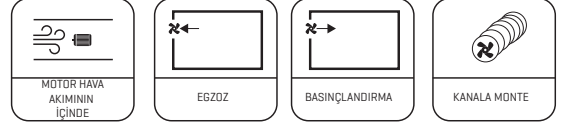


Model	W	L	H	axb	cxd
SAY-K-225	700	900	600	280x280	320x615
SAY-K-250	700	900	700	320x320	330x615
SAY-K-280	800	1000	800	360x360	380x715
SAY-K-315	900	1100	900	400x400	430x815
SAY-K-355	900	1100	900	450x450	430x815
SAY-K-400	1040	1380	1040	500x500	500x955
SAY-K-450	1240	1540	1140	560x560	600x1155
SAY-K-500	1400	1540	1240	630x630	600x1155
SAY-K-560	1500	1740	1400	710x710	600x1155
SAY-K-630	1600	2040	1500	800x800	640x1515
SAY-K-630 K	1500	2040	1500	800x800	640x1515

- * Ölçülere Şase / Ayak Yükseklikleri Dahil Değildir.
- * İstenmesi Durumunda Şase 15 cm, Ayak Yükseklikleri 10 cm'dir.
- * Ölçüler mm cinsindedir.

SHRV Serisi

Radyal Fanlı Alüminyum Plaka Eşanjörlü



MOTOR YALITIM SINIFI	F
MOTOR KORUMA SINIFI	IP44
GÖVDE MALZEMESİ	GALVANİZE SAC
GÖREV DÖNGÜSÜ	IEC Duty Cycle - SI
ÇALIŞMA SICAKLIĞI	- 10° - + 40°
STANDARTLAR	IEC - 60335-2-80, ISO190040-1

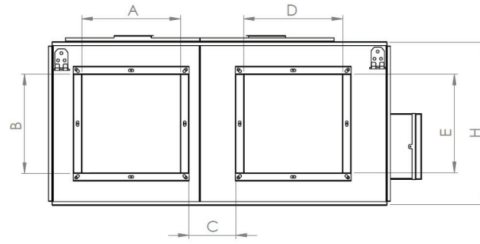
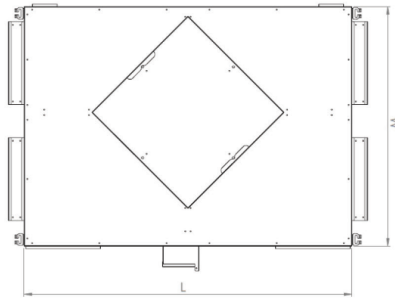
Cihaz Modeli	SHRV - 10	SHRV - 15	SHRV - 20	SHRV - 25	SHRV - 30	SHRV - 40	SHRV - 50
Hava Debisi [m ³ /h]	1000	1500	2000	2500	3000	4000	5000
Cihaz Dışı Statik Basınç [Pa]	120	320	200	200	100	100	150
Motor Gücü [Watt]	2x150	2x375	2x375	2x450	2x450	2x550	2x1270
Besleme Gerilimi	230 V / 50 Hz						
Ses Basınç Seviyesi [dBA]	45	46	48	52	55	55	60
Filtre Tipi	EN 779 Standartlarına Uygun G Sınıfı Sentetik Filtre						

Standart Cihaz Fiyatı [€]

--	--	--	--	--	--	--	--

Opsiyonel - Aksesuarlar

Elektrikli Isıtıcı [kW] Oda Paneli	3 kW/1 Kd	6 kW/2 Kd	6kW/2 Kd	9kW/3 Kd	9kW/3 Kd	12kW/3Kd	18kW/3 Kd
Elektrikli Isıtıcı Besleme Gerilimi	400 V 500 Hz						
Fiyat Listesi [€]							

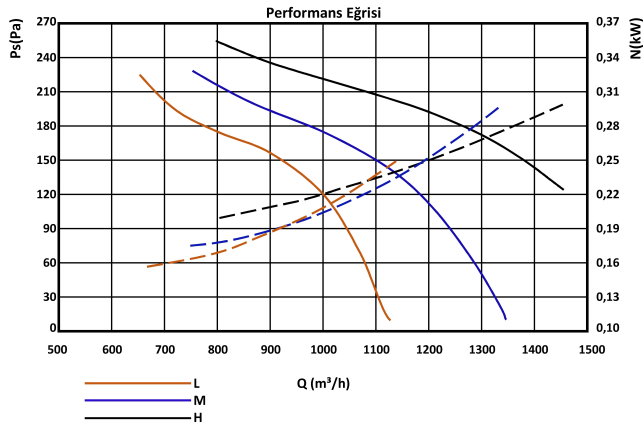


Tip [KOD]	SHRV - 10	SHRV - 15	SHRV - 20	SHRV - 25	SHRV - 30	SHRV - 40	SHRV - 50
L	1000	1205	1205	1405	1405	1500	1890
W	850	965	965	1105	1105	1200	1420
H	400	450	450	500	500	500	575
A	250	270	270	330	330	400	400
B	250	270	270	330	330	400	400
C	115	192	192	170	170	164	255
D	250	270	270	330	330	400	400
E	250	270	270	330	330	400	400

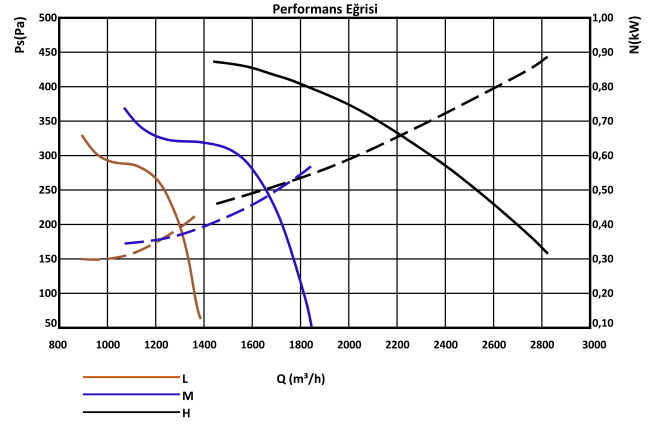
*Ölçüler mm cinsindedir.

Performans Eğrileri

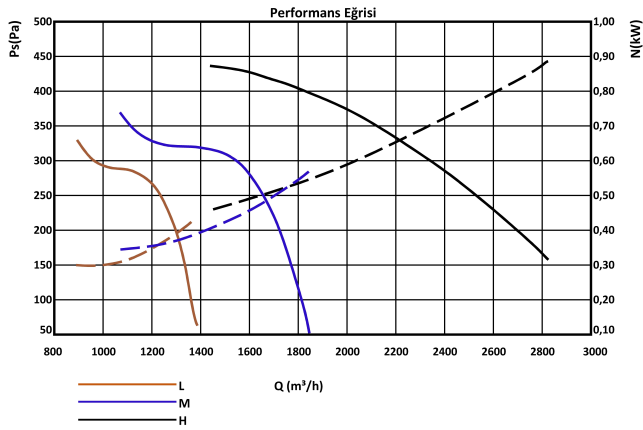
SHRV - 10



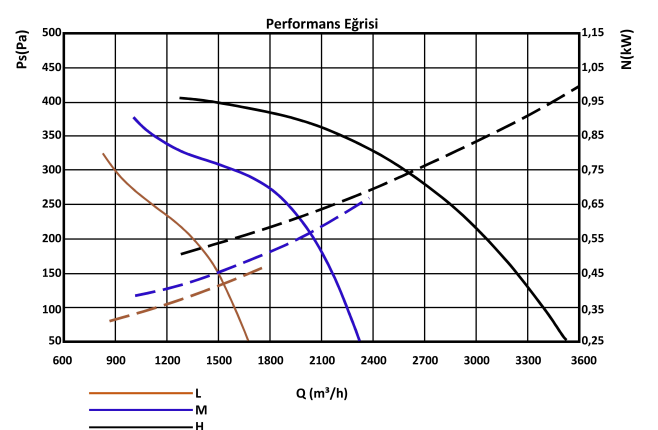
SHRV - 15



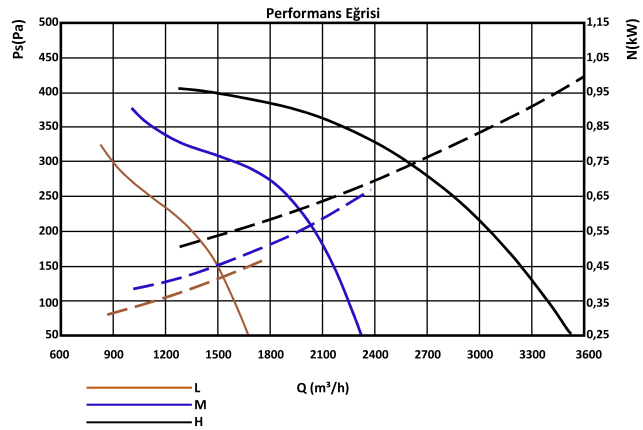
SHRV - 20



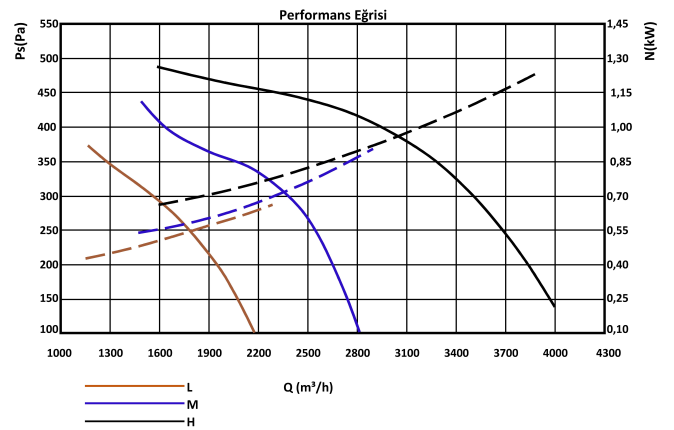
SHRV - 25



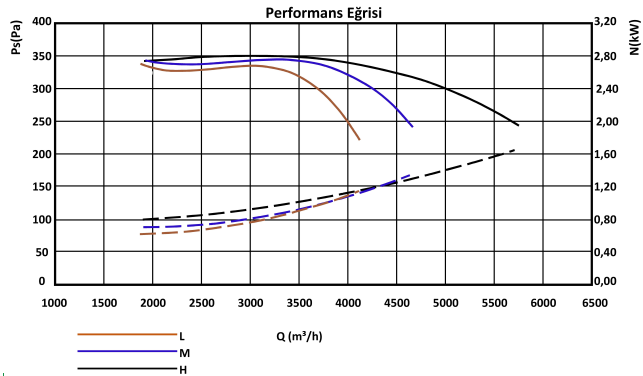
SHRV-30



SHRV-40

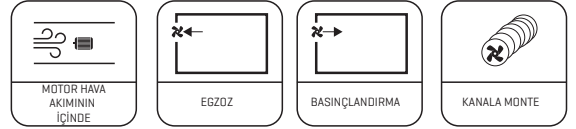
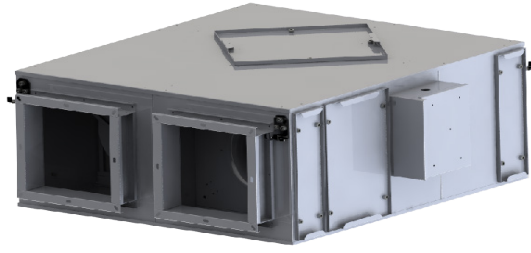


SHRV - 50



SHRV - P Serisi

Radyal Fanlı Alüminyum Plaka Eşanjörlü



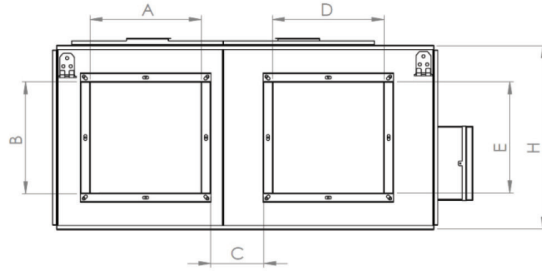
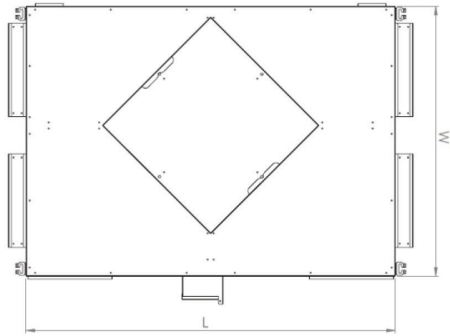
MOTOR YALITIM SINIFI	F
MOTOR KORUMA SINIFI	IP44
GÖVDE MALZEMESİ	GALVANİZE SAC
GÖREV DÖNGÜSÜ	IEC Duty Cycle - SI
ÇALIŞMA SICAKLIĞI	- 10° - + 40°
STANDARTLAR	IEC - 60335-2-80,ISO190040-1

Cihaz Modeli	SHRV - P / 10	SHRV - P / 15	SHRV - P / 20	SHRV - P / 30	SHRV - P / 40	SHRV - P / 50
Hava Debisi [m3/h]	1000	1500	2000	3000	4000	5000
Cihaz Dışı Statik Basınç [Pa]	110	50	100	150	100	150
Motor Gücü [Watt]	2x230	2x210	2x400	2x510	2x510	2x800
Besleme Gerilimi	230 V / 50 Hz / 1					
Ses Basınç Seviyesi [dBA]	43	45	48	52	52	79
Filtre Tipi	EN 779 Standartlarına Uygun G Sınıfı Sentetik Filtre					

Standart Cihaz Fiyatı [€]

Opsiyonel - Aksesuarlar

Elektrikli Isıtıcı [kW] Oda Paneli	3 kW/1 Kd	6 kW/2 Kd	6kW/2 Kd	9kW/3 Kd	9kW/3 Kd	12kW/3Kd	18kW/3 Kd
Elektrikli Isıtıcı Besleme Gerilimi	400 V 500 Hz						
Fiyat Listesi							

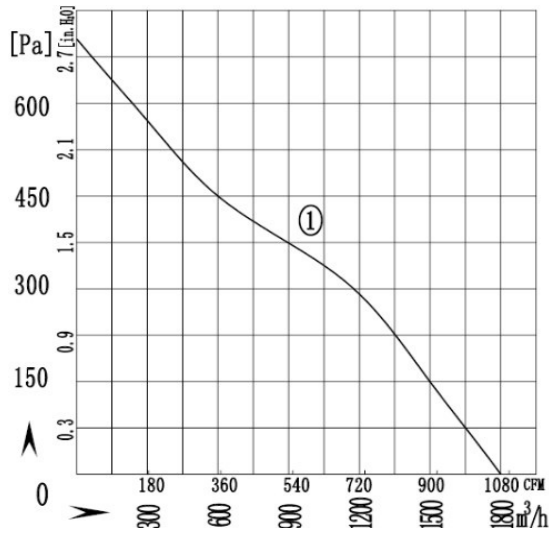


Tip [KOD]	SHRV - P / 10	SHRV - P / 15	SHRV - P / 20	SHRV - P / 30	SHRV - P / 40	SHRV - P / 50
L	910	1220	1240	1600	1600	1960
W	810	950	1075	1075	1075	1415
H	400	465	500	500	500	575
A	250	275	300	350	350	400
B	250	275	300	350	350	400
C	100	130	180	115	115	255
D	250	275	300	350	350	400
E	250	275	300	350	350	400

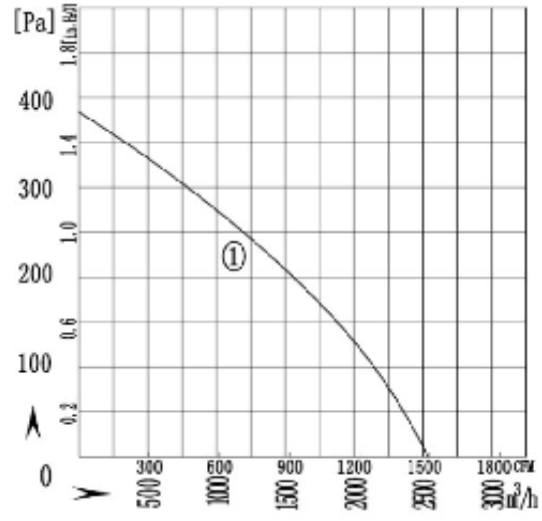
*Ölçüler mm cinsindedir.

Performans Eğrileri

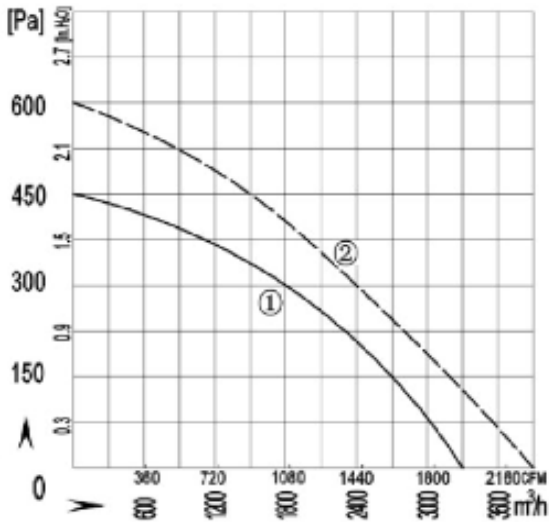
SHRV - P - 10



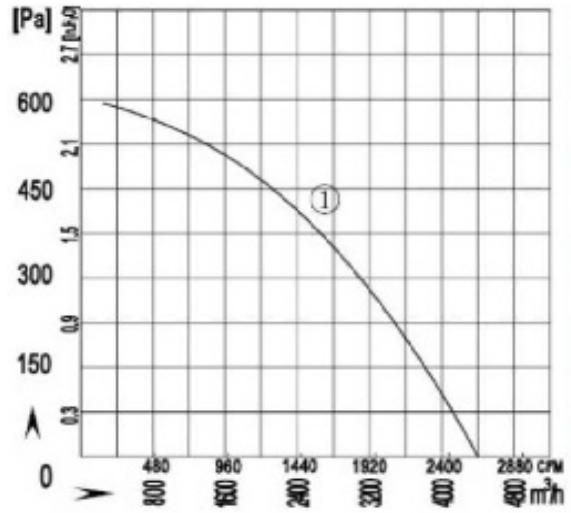
SHRV - P - 15



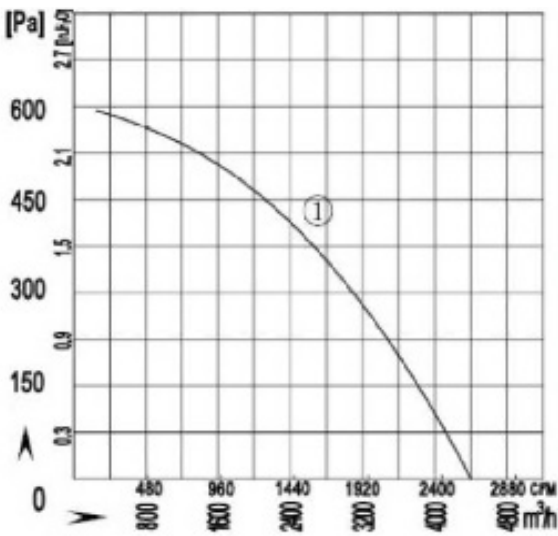
SHRV - P - 20



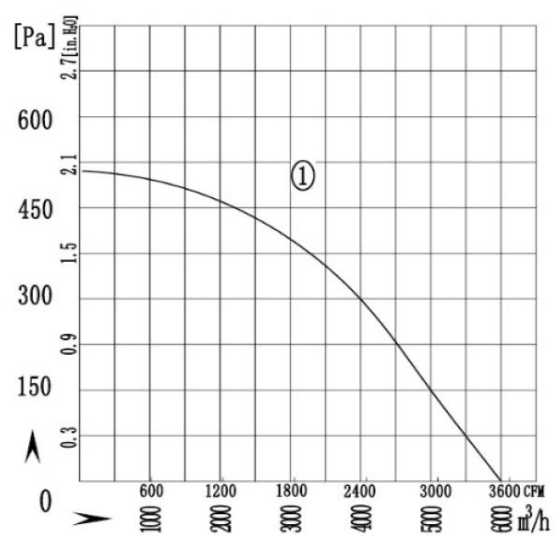
SHRV - P - 30



SHRV - P - 40



SHRV - P - 50



Kanal Tipi Elektrikli Isıtıcı

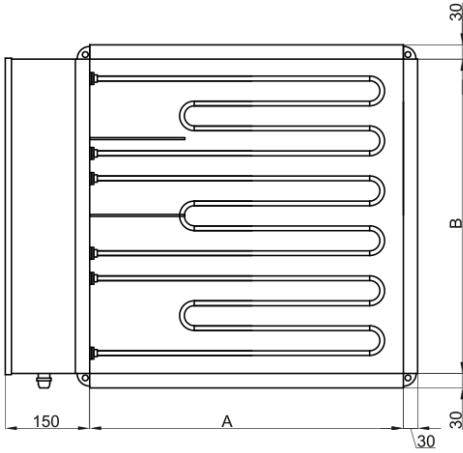
Elektrikli Kanal Tipi Isıtıcı



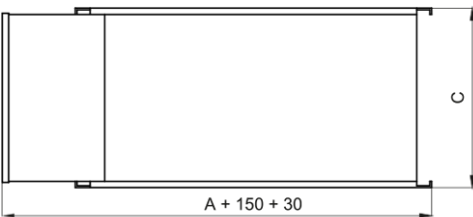
Teknik Özellikler

- * Kanal Tipi Isıtıcılar 70° ayarlı otomatik devreye girip çıkan sıcaklık termostatı kullanılır.
- * Kanal Tipi ısıtıcılar 110° ayarlı manuel resetli emniyet termostatı kullanılır.
- * Kullanılan rezidanslar 304 kalite paslanmazdan imal edilir.
- * Kanal Tipi ısıtıcıların Üzerinde kademe sayısı kadar kontaktör kullanılır ve kademe sayısına uygun şalter verilir.
- * 24 kW üstü güçler için içinde kontaktör ve şalterin bulunduğu harici pano verilir.

Cihaz Modeli	Kapasite	Voltaj [V]	Kademe	Frekans [Hz]	Şalter Fiyatı [€]	Isıtıcı Fiyatı [€]
SAY-30x25	3 kW	380	1 kd	50		
SAY-30x25	6 kW	380	2 kd	50		
SAY-30x25	9 kW	380	3 kd	50		
SAY-40x30	12 kW	380	3 kd	50		
SAY-45x30	18 kW	380	3 kd	50		
SAY-60x30	24 kW	380	3 kd	50		
SAY-75x30	30 kW	380	3 kd	50		
SAY-75x30	36 kW	380	3 kd	50		
SAY-60x45	42 kW	380	3 kd	50		
SAY-60x45	48 kW	380	3 kd	50		



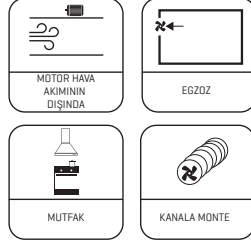
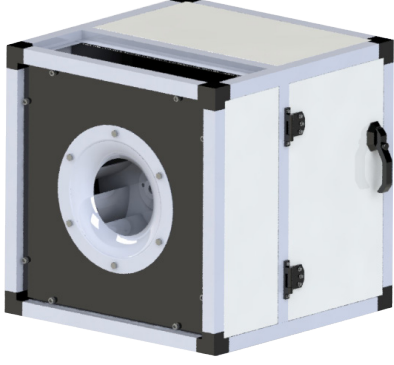
Cihaz Modeli	A	B	C	Güç / Gerilim / Kademe
SAY-30x25	300	250	200	3 kW /380V 1 Kdm
SAY-30x25	300	250	280	6 kW /380V 2 Kdm
SAY-30x25	300	250	360	9 kW /380V 3 Kdm
SAY-40x30	400	300	360	12 kW /380V 3 Kdm
SAY-45x30	450	300	360	18 kW /380V 3 Kdm
SAY-60x30	600	300	400	24 kW /380V 3 Kdm
SAY-75x30	750	300	400	30 kW /380V 3 Kdm
SAY-75x30	750	300	400	36 kW /380V 3 Kdm
SAY-60x45	600	450	400	42 kW /380V 3 Kdm
SAY-60x45	600	450	400	48 kW /380V 3 Kdm



* Ölçüler mm cinsindedir.

MEF Serisi

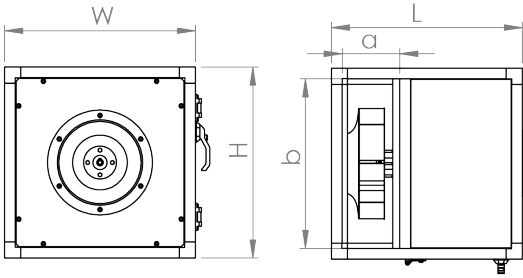
Plug Fanlı Geriye Eğimli Seyrek Kanatlı Direkt Akuple Radyal Fanlar



MOTOR YALITIM SINIFI	F
MOTOR KORUMA SINIFI	IP55
MOTOR VERİM SINIFI	IE3
MOTOR TİPİ	TEFC
MOTOR MARKASI	GAMAK
GÖVDE MALZEMESİ	GALVANİZE SAC
PERVANE MALZEMESİ	ST42
GÖREV DÖNGÜSÜ	IEC Duty Cycle - S1
ÇALIŞMA SICAKLIĞI	- 20° - + 50°
STANDARTLAR	IEC - 60335-2-80,ISO190040-1

Model [Kod]	Motor Gücü [kW]	Frekans [Hz]	Voltaj [V]	Debi [m ³ /h]	Basınç [mmSS]	Fiyatı [€]
MEF-400	0,55	50	380	2500	40	
MEF-450	1,1	50	380	5000	40	
MEF-500	1,5	50	380	7500	40	
MEF-560	3	50	380	10000	55	
MEF-630	5,5	50	380	15000	65	
MEF-710	11	50	380	22000	80	
MEF-800	15	50	380	32500	90	
MEF-900	30	50	380	47500	100	

TEKNİK RESİM

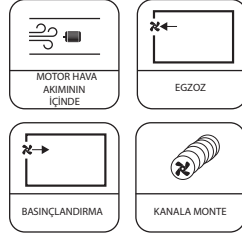


Model	W	L	H	axb	ØD
MEF - 400	800	700	800	265x715	290
MEF - 450	900	800	900	285x815	300
MEF - 500	1000	900	1000	305x915	350
MEF - 560	1100	900	1100	335x1015	400
MEF - 630	1200	1000	1200	355x1115	630
MEF - 710	1400	1200	1400	475x1315	710
MEF - 800	1600	1300	1600	485x1515	800
MEF - 900	1800	1400	1800	505x1715	900

- * Ölçülere Şase / Ayak Yükseklikleri Dahil Değildir.
- * İstenmesi Durumunda Şase 15 cm, Ayak Yükseklikleri 10 cm'dir.
- * Ölçüler mm cinsindedir.

SDKF Serisi

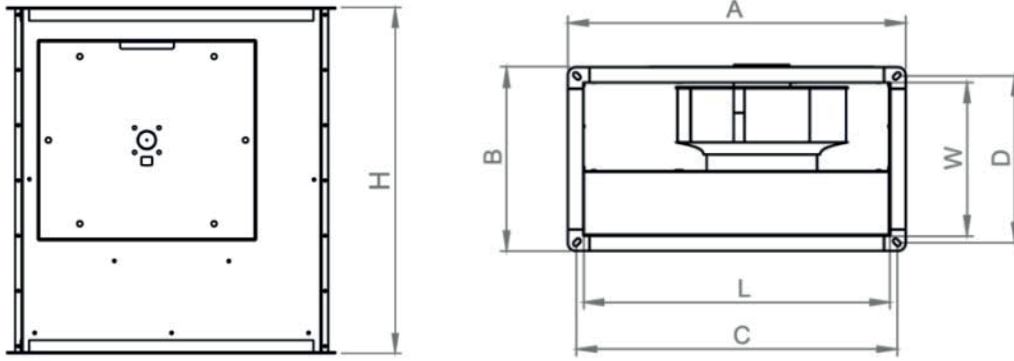
Geriyeye Eğimli Seyrek Kanatlı Dikdörtgen Radyal Fanlar



MOTOR YALITIM SINIFI	F
MOTOR KORUMA SINIFI	IP44
GÖVDE MALZEMESİ	GALVANİZE SAC
GÖREV DÖNGÜSÜ	IEC Duty Cycle - S1
ÇALIŞMA SICAKLIĞI	- 30 ° - + 60 °
STANDARTLAR	IEC - 60335-2-80, ISO190040-1

Cihaz Modeli	Voltaj (V)	Frekans (Hz)	Hız Anahtarı	Güç (Watt)	Devir (d/d)	Ses Seviyesi	Debi (m3/h)	Fiyat ₺
SDKF - 30 - 15	230	50	SHA-2,5	60	2500	65	540	
SDKF - 40 - 20	230	50	SHA-2,5	135	2600	70	1100	
SDKF - 50 - 25	230	50	SHA-2,5	250	2650	80	1800	
SDKF - 60 - 30	230	50	SHA-2,5	210	1400	63	2520	
SDKF - 60 - 35	230	50	SHA-2,5	510	1380	69	4100	
SDKF - 70 - 40	230	50	SHA - 5	800	1350	79	6000	
SDKF - 70 - 45*	380	50	-	1100	1400	82	7000	
SDKF - 80 - 50*	380	50	-	1500	1400	80	9500	

* İşaretli ürünler 380V (Trifaze) olduğundan dolayı motor korumasıyla beraber çalıştırınız

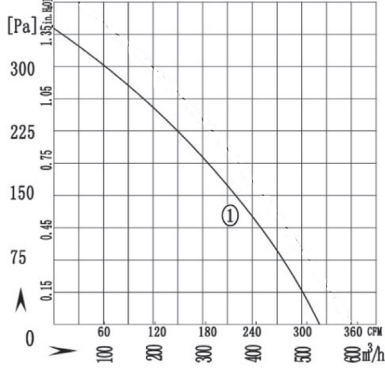


Cihaz Modeli	W	L	H	A	B	C	D
SDKF - 30 - 15	150	300	430	350	200	325	175
SDKF - 40 - 20	200	400	525	450	250	425	225
SDKF - 50 - 25	250	500	580	550	300	525	275
SDKF - 60 - 30	300	600	755	650	350	625	325
SDKF - 60 - 35	350	600	840	650	400	625	375
SDKF - 70 - 40	400	700	950	750	450	725	425
SDKF - 70 - 45*	450	750	950	750	500	725	475
SDKF - 80 - 50*	500	800	1000	850	550	825	525

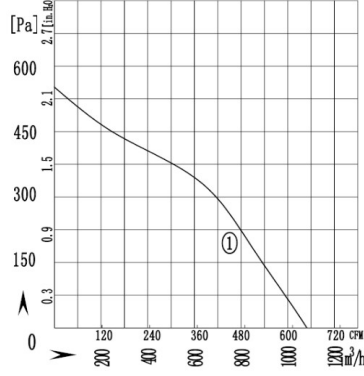
*Ölçüler mm cinsindedir.

Performans Eğrileri

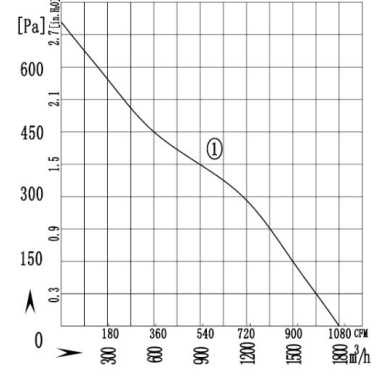
SDKF - 30 - 15



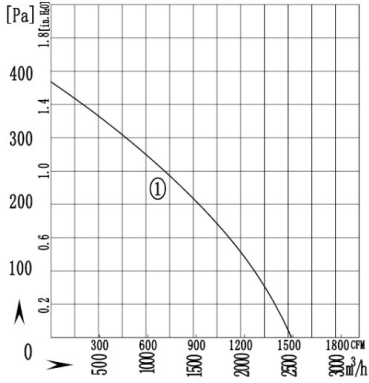
SDKF - 40 - 20



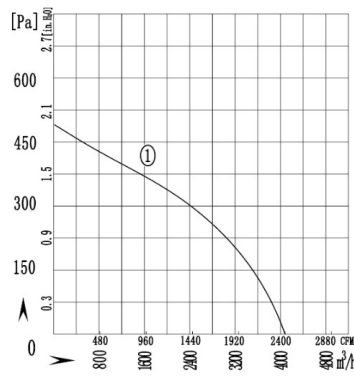
SDKF - 50 - 25



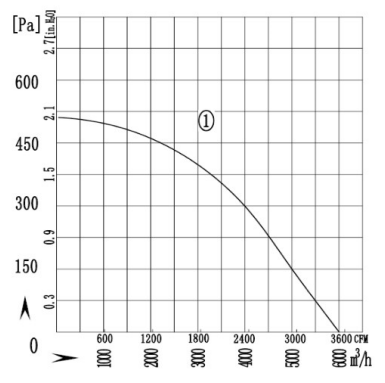
SDKF - 60 - 30



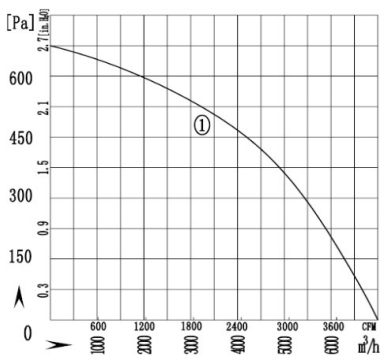
SDKF - 60 - 35



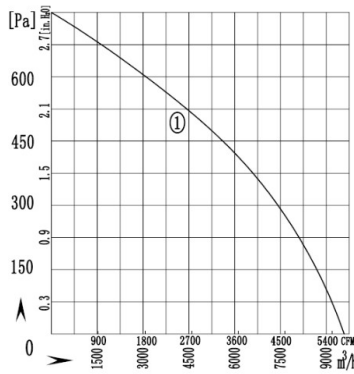
SDKF - 70 - 40



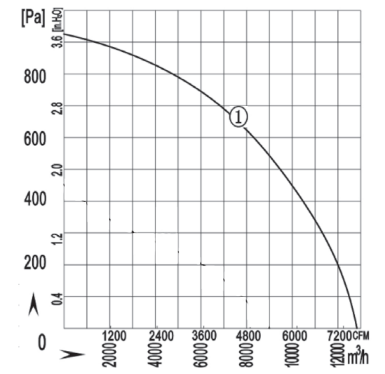
SDKF - 70 - 45



SDKF - 80 - 50

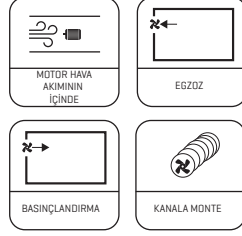


SDKF - 100 - 50



SRD - Serisi

Sac Kanatlı Kanal Tipi Aksiyal Fanlar



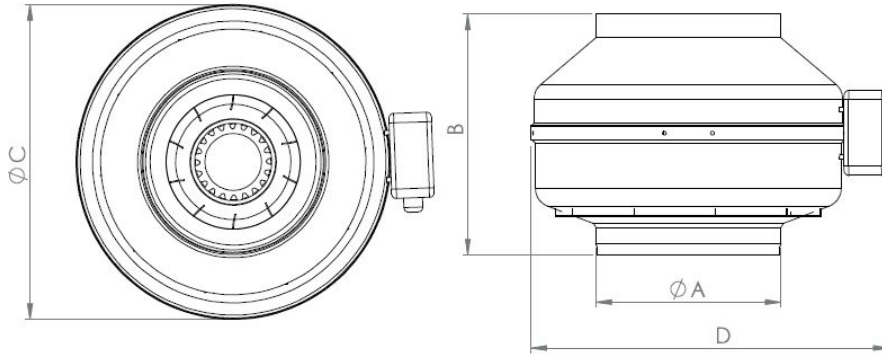
MOTOR YALITIM SINIFI	F
MOTOR KORUMA SINIFI	IP44
GÖVDE - PERVANE MALZEMESİ	GALVANİZE SAC
GÖREV DÖNGÜSÜ	IEC Duty Cycle - SI
ÇALIŞMA SICAKLIĞI	- 20° - + 50°
STANDARTLAR	IEC - 60335-2-80,ISO190040-1

Cihaz Modeli	Voltaj [V]	Frekans [Hz]	Hız Anahtarı	Güç [Watt]	Devir [d/d]	Ses Seviyesi	Debi [m3/h]	Fiyat [€]
SRD - 100	230	50	SHA-2,5	80	2600	47	290	
SRD - 125	230	50	SHA-2,5	80	2600	47	410	
SRD - 150	230	50	SHA-2,5	85	2600	50	700	
SRD - 160	230	50	SHA-2,5	85	2600	51	710	
SRD - 200	230	50	SHA-2,5	122	2600	52	1000	
SRD - 250	230	50	SHA-2,5	145	2675	54	1120	
SRD - 315	230	50	SHA-2,5	210	2615	57	1750	
SRD - 355	230	50	SHA-2,5	380	2480	59	2200	

*Değerler 0 Pa içindir.

Hız Anahtarı

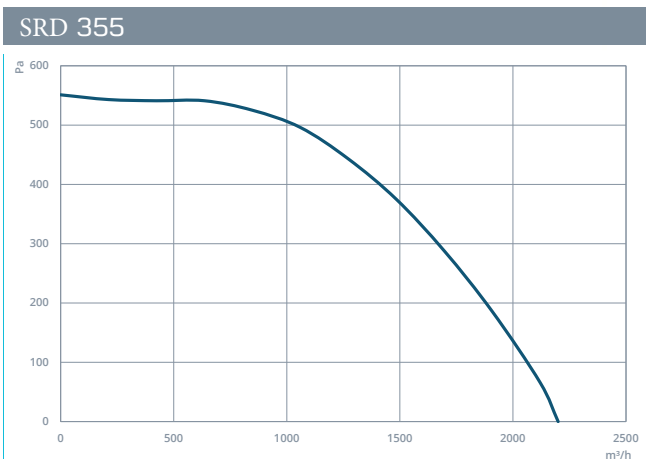
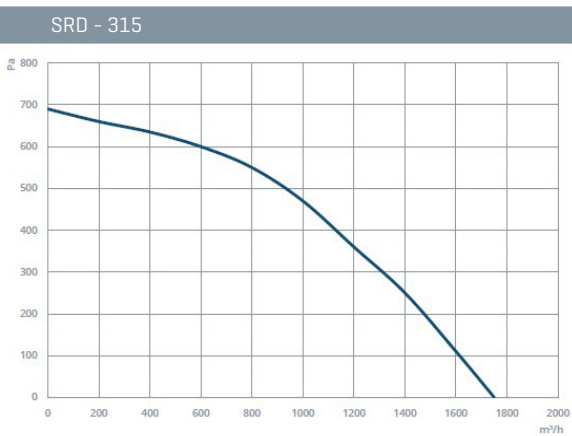
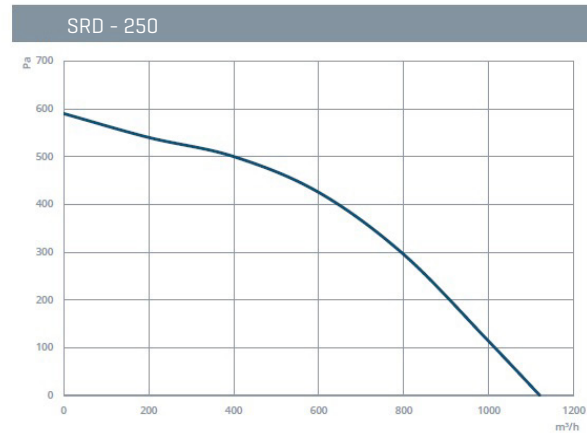
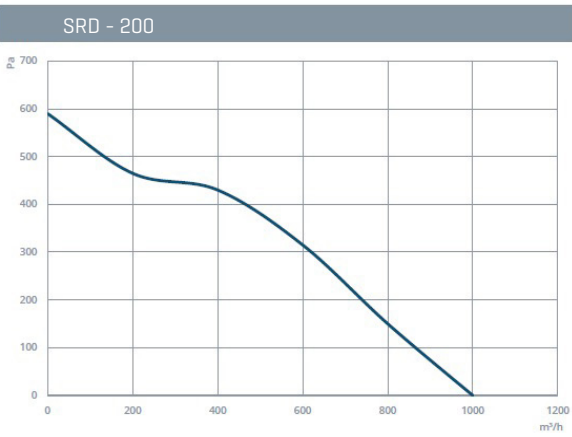
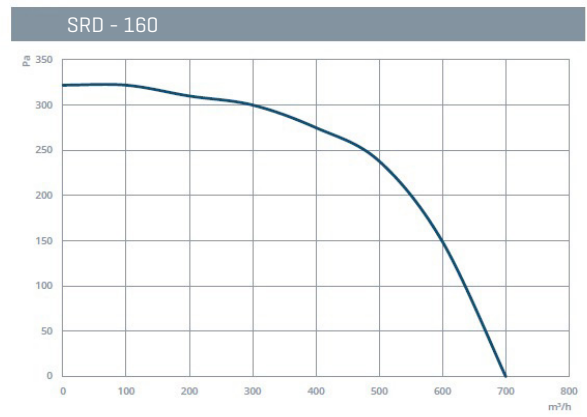
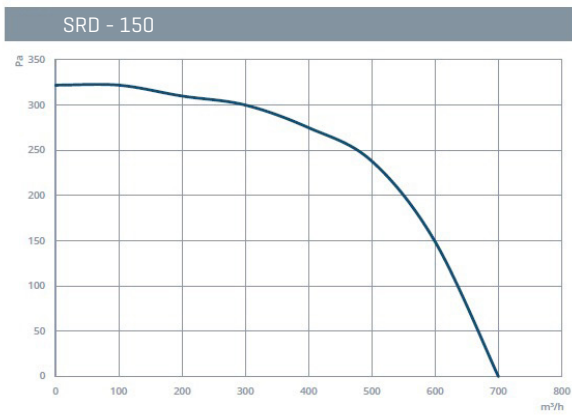
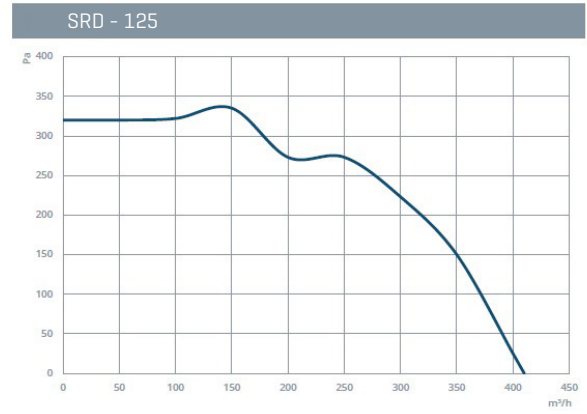
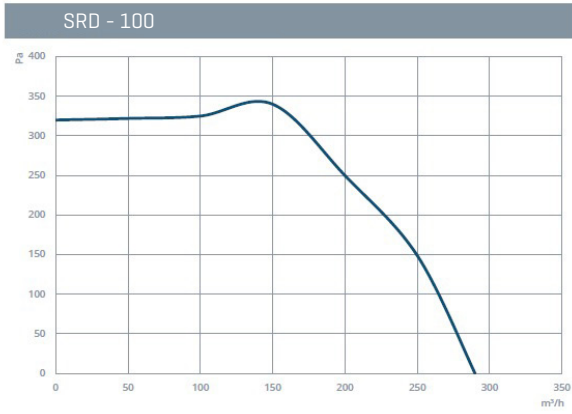
Model		Fiyat [€]
SHA -2,5	Elektronik,maks. 2,5 A	30



Cihaz Modeli	A	B	C	D
SRD - 100	100	208	246	290
SRD - 125	100	208	246	290
SRD - 150	150	196	270	320
SRD - 160	160	196	270	320
SRD - 200	200	255	333	380
SRD - 250	250	234	331	380
SRD - 315	315	283	401	450
SRD - 355	315	283	401	450

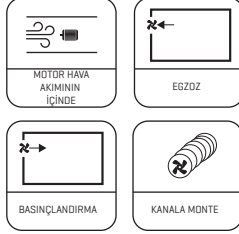
* Ölçüler mm cinsindedir.

Performans Eğrileri



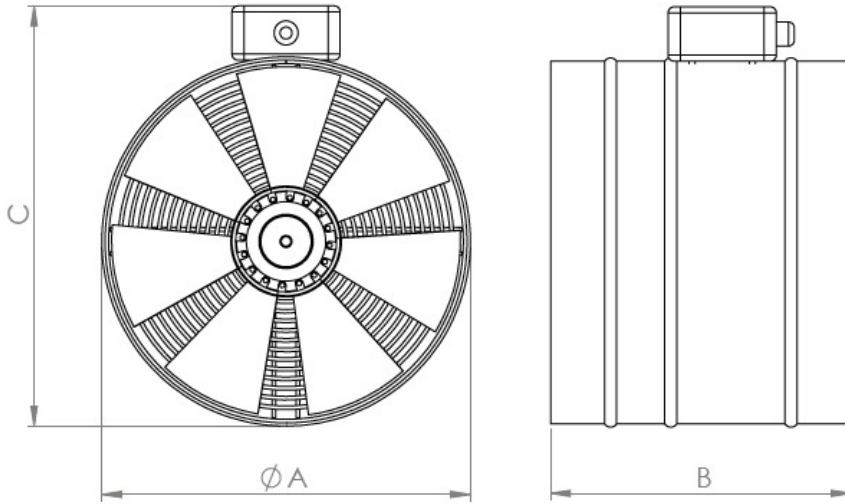
SRDX - Serisi

Sac Kanatlı Kanal Tipi Aksiyal Fanlar



MÖTÖR YALITIM SINIFI	F
MÖTÖR KORUMA SINIFI	IP44
GÖVDE - PERVANE MALZEMESİ	GALVANİZE SAC
GÖREV DÖNGÜSÜ	IEC Duty Cycle - S1
ÇALIŞMA SICAKLIĞI	- 20° - + 50°
STANDARTLAR	IEC - 60335-2-80, ISO190040-1

Cihaz Modeli	Voltaj [V]	Frekans [Hz]	Güç [Watt]	Devir [d/d]	Ses Seviyesi	Debi [m3/h]	Fiyat €
SRDX - 200	230	50	67	2700	60	680	
SRDX - 250	230	50	110	2640	70	1500	
SRDX - 300	230	50	160	2630	72	2020	
SRDX - 350	230	50	240	2280	78	3110	
Değerler 0 Pa içindir.							

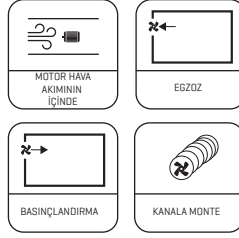


Cihaz Modeli	A	B	C
SRDX - 200	200	200	250
SRDX - 250	250	250	300
SRDX - 300	300	300	350
SRDX - 350	350	350	400

*Ölçüler mm cinsindedir.

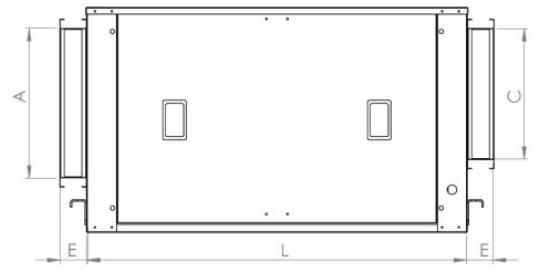
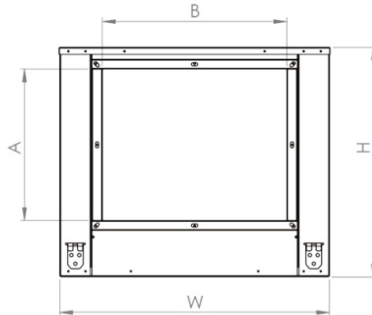
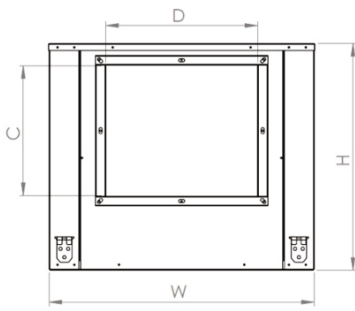
SAYT - Serisi

Öne Eğimli Çift Emişli Kayış Kasnaklı Radyal Fanlar



MOTOR YALITIM SINIFI	F
MOTOR KORUMA SINIFI	IP55
MOTOR VERİM SINIFI	IE3
MOTOR TİPİ	TEFC
MOTOR MARKASI	GAMAK
GÖVDE MALZEMESİ	GALVANİZE SAC
GÖVDE KAPLAMASI	
PERVANE MALZEMESİ	GALVANİZE SAC
GÖREV DÖNGÜSÜ	IEC Duty Cycle - SI
ÇALIŞMA SICAKLIĞI	- 20° - + 50°
STANDARTLAR	IEC - 60335-2-80, ISO190040-1

Model [Kod]	Motor Gücü [kW]	Frekans [Hz]	Voltaj [V]	Debi [m³/h]	Basınç [mmSS]	Birim Fiyatı [€]
SAYT-7/7	0,75	50	380	2500	25	
SAYT - 7/7	1,5	50	380	3400	25	
SAYT-9/9	1,1	50	380	4500	25	
SAYT-9/9	1,5	50	380	5000	25	
SAYT-10/10	1,5	50	380	6000	25	
SAYT-10/10	2,2	50	380	7000	25	
SAYT-12/12	2,2	50	380	8400	25	
SAYT-12/12	3	50	380	9500	25	
SAYT-15/15	3	50	380	12000	25	
SAYT-15/15	4	50	380	14000	25	
SAYT-15/15LK	5,5	50	380	15000	25	
SAYT-18/18	5,5	50	380	18000	25	
SAYT-18/18	7,5	50	380	20000	25	

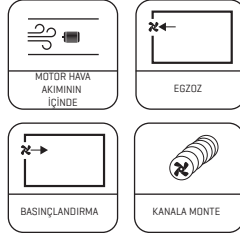


Model	L	W	H	A	B	C	D	E
SAYT-7/7	730	495	390	277	227	210	235	55
SAYT-9/9	800	650	460	320	430	265	300	55
SAYT-10/10	900	650	505	330	430	290	335	55
SAYT-12/12	1000	695	590	390	473	340	400	60
SAYT-15/15	1100	850	685	475	628	405	475	60
SAYT-18/18	1355	1025	800	450	800	480	560	60

*Ölçüler mm cinsindedir.

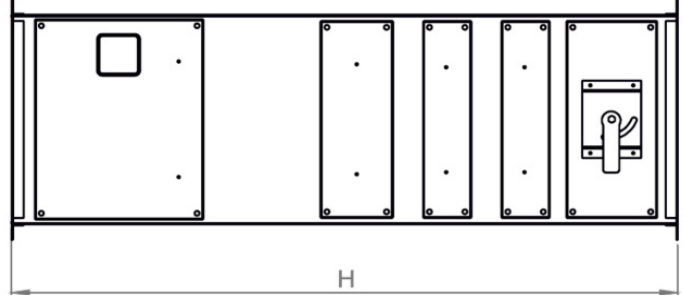
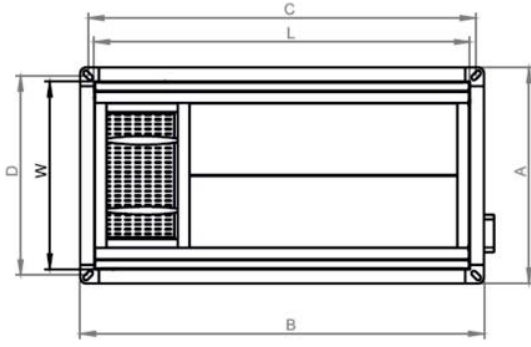
SHS Serisi

Plug Fanlı Geriye Eğik Seyrek Kanatlı Radyal Fanlar



MOTOR YALITIM SINIFI	F
MOTOR KORUMA SINIFI	IP44
GÖVDE MALZEMESİ	GALVANİZE SAC
GÖREV DÖNGÜSÜ	IEC Duty Cycle - SI
ÇALIŞMA SICAKLIĞI	- 30° - + 60°
STANDARTLAR	IEC - 60335-2-80, ISO190040-1

Cihaz Modeli	Motor Gücü [kW]	Frekans [Hz]	Voltaj [V]	Devir [d/d]	Debi [m3/h]	Basınç [mmSS]	Emiş Ölçüsü [mm]	Çıkış Ölçüsü [mm]	Fiyat
SHS - 50 - 35	230	50	230	2700	1000	30	50x35	50x35	
SHS - 80 - 40	210	50	230	1400	2000	12	80x40	80x40	
SHS - 90 - 45	430	50	230	1380	3000	24	90x45	90x45	



Cihaz Modeli	W	L	H	A	B	C	D
SHS - 50 - 35	350	500	1190	400	550	525	375
SHS - 80 - 40	400	800	1250	450	850	825	425
SHS - 90 - 45	450	900	1250	510	960	930	480

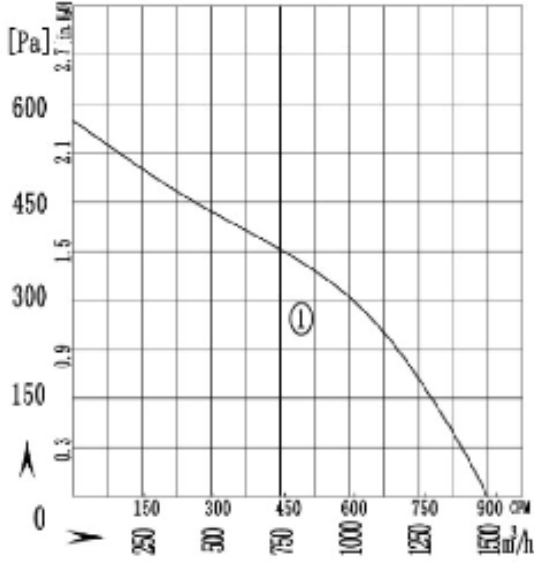
*Ölçüler mm cinsindedir.

Özellikler

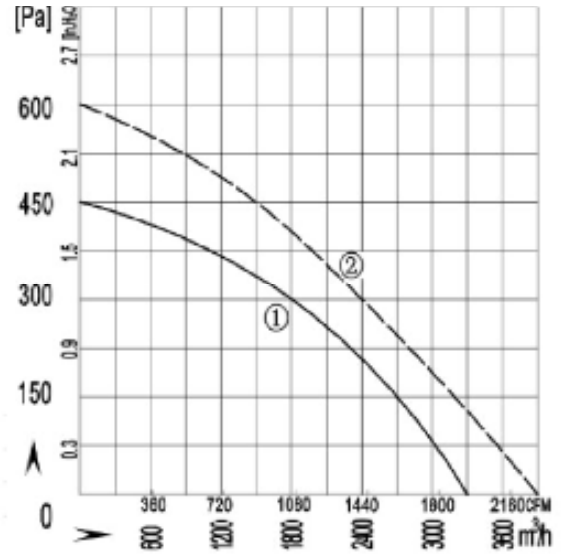
- *Radyoaktif Nükleer Serpinti Tutucu Filtre
- *Aktif Karbon Filtre
- *G4 Kaba Filtre
- *By-pass Hücresi
- *Kanal Tipi
- *Kolay Montaj
- *İmar Yönetmeliğine Uygun
- *Kolay Değiştirilebilir Sürgülü Filtre

Performans Eğrileri

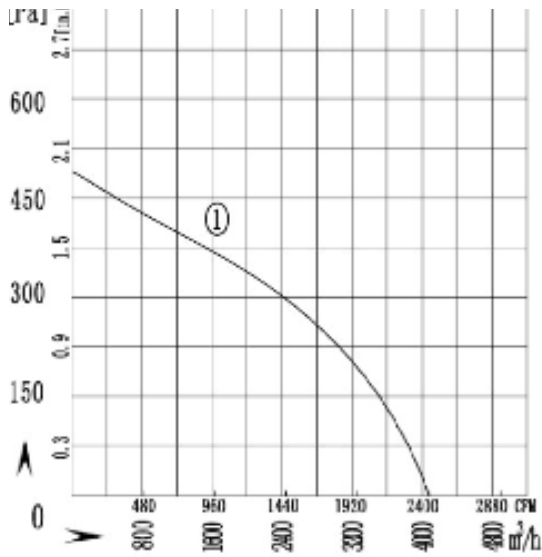
SHS - 50 - 35



SHS - 80 - 50

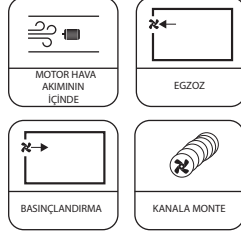


SHS - 90 - 45



KTA Serisi

Direkt Akuple Alüminyum Pervaneli Aksiyal Fanlar



MOTOR YALITIM SINIFI	F
MOTOR KORUMA SINIFI	IP55
GÖVDE MALZEMESİ	ST42
GÖREV DÖNGÜSÜ	IEC Duty Cycle - S1
ÇALIŞMA SICAKLIĞI	- 10 ° - + 40 °
STANDARTLAR	IEC - 60335-2-80,ISO190040-1

Cihaz Modeli	Motor Gücü (kW)	Frekans (Hz)	Voltaj (V)	Debi (m3/h)	Basınc (mmSS)	Çap Ømm	Fiyat (₺)
KTA -450/A	0,37	50	380	3000	15	470	
KTA -450/B	0,75	50	380	5000	15	470	
KTA-500/A	0,75	50	380	6000	15	520	
KTA-500/B	1,1	50	380	8000	15	520	
KTA-560/A	1,1	50	380	10000	15	580	
KTA-560/B	1,5	50	380	12000	15	580	
KTA-630/A	2,2	50	380	15000	15	650	
KTA-630/B	3	50	380	17000	15	650	
KTA-710/A	3	50	380	20000	15	730	
KTA-710/B	4	50	380	25000	15	730	
KTA-800/A	4	50	380	30000	15	820	
KTA-800/B	5,5	50	380	33000	15	820	
KTA-900/A	5,5	50	380	38000	15	920	
KTA-900/B	7,5	50	380	43000	15	920	
KTA-1000/A	7,5	50	380	47000	15	1020	
KTA-1000/B	11	50	380	54000	15	1020	
KTA-1000/C	15	5	380	60000	15	1020	
KTA-1120 A	18,5	50	380	72000	15	1140	
KTA-1120 B	22	50	380	82000	15	1140	
KTA-1120 C	30	50	380	92000	15	1140	

* Silindirik Gövde Yapısı ve Alüminyum Ayarlanabilir Kanat Yapısı

* Farklı Kanat Sayıları ve Çaplarda

* İsteğe Bağlı Çift Devirli Motor

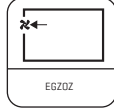
* İsteğe Bağlı ATEX Ex Proof Versiyonu

* İsteğe Bağlı 200 °C/ 2h 300°C/2h Seçeneği

* Ölçüler mm cinsindedir.

DKA Serisi

Duvar ve Cama Monte Edilebilir



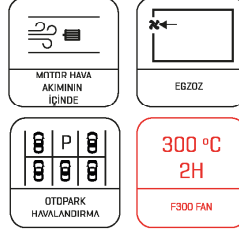
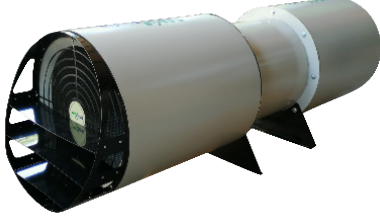
MOTOR YALITIM SINIFI	F
MOTOR KORUMA SINIFI	IP55
GÖVDE MALZEMESİ	ST42
GÖREV DÖNGÜSÜ	IEC Duty Cycle - SI
ÇALIŞMA SICAKLIĞI	- 10° - + 40°
STANDARTLAR	IEC - 60335-2-80,ISO190040-1

Cihaz Modeli	Motor Gücü [kW]	Frekans [Hz]	Voltaj [V]	Debi [m3/h]	Basınç [mmSS]	Çap Ømm	Fiyat [€]
DKA -450/A	0,37	50	380	3000	15	470	
DKA -450/B	0,75	50	380	5000	15	470	
DKA-500/A	0,55	50	380	6500	15	520	
DKA-500/B	1,1	50	380	8000	15	520	
DKA-560/A	1,1	50	380	10000	15	580	
DKA-560/B	1,5	50	380	12500	15	580	
DKA-630/A	2,2	50	380	15000	15	650	
DKA-630/B	3	50	380	17000	15	650	
DKA-710/A	3	50	380	20000	15	730	
DKA-710/B	4	50	380	25000	15	730	
DKA-800/A	4	50	380	30000	15	820	
DKA-800/B	5,5	50	380	33000	15	820	
DKA-900/A	5,5	50	380	38000	15	920	
DKA-900/B	7,5	50	380	40000	15	920	
DKA-1000/A	7,5	50	380	45000	15	1020	
DKA-1000/B	11	50	380	53000	15	1020	
DKA-1000/C	15	5	380	60000	15	1020	

* Ölçüler mm cinsindedir.

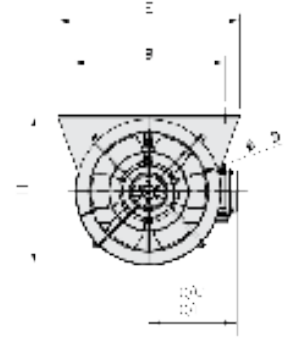
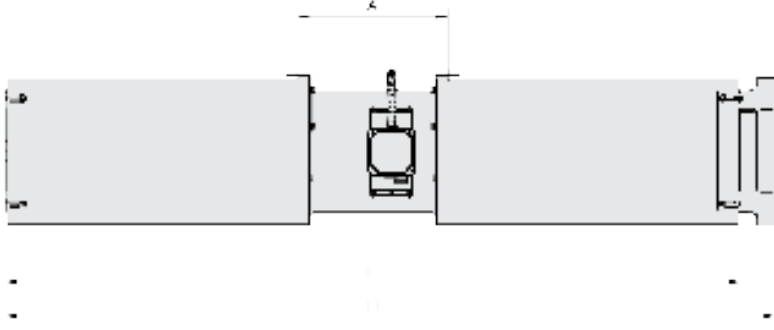
SAJF - Serisi

Aksiyal Jet Fan



MOTOR YALITIM SINIFI	H
MOTOR KORUMA SINIFI	IP54 - IP55
MOTOR VERİM SINIFI	IE1-IE2
MOTOR TİPİ	TEA0
GÖVDE MALZEMESİ	ST42
GÖVDE KAPLAMASI	ELEKTROSTATİK TOZ BOYA
PERVANE MALZEMESİ	ALÜMİNYUM
GÖREV DÖNGÜSÜ	IEC Duty Cycle - SI
STANDARTLAR	IEC - 60335-2-80,ISO190040-1

Cihaz Modeli	Devir [d/d]	İtme [N]	Hava Debisi [m³/h]	Hava Hızı [m/s]	Motor Gücü [kW]	Max.Çekilen Akım [A]	Ses Basınç Seviyesi [LpA]	Fiyat [€]
SAJF - 315	2790	25	4600	16	0,75	1,6	62	
SAJF - 355	2810	43	6800	19	1,1	2,3	66	
SAJF - 400	2870	68	9700	21	1,5	3	70	

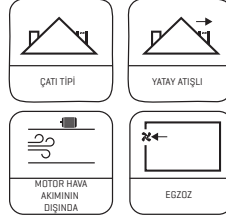


Cihaz Modeli	A	B	C/C	C/1	D	E	H	L	L1
SAJF - 315	310	405	236	279	385	485	397	1754	1810
SAJF - 355	310	445	259	302	425	525	437	1754	1810
SAJF - 400	310	506	283	326	486	586	498	1754	1810

*Ölçüler mm cinsindedir.

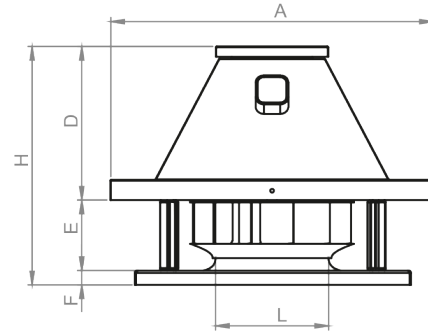
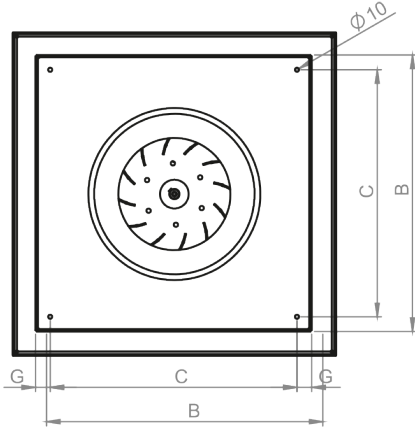
CTF - Serisi

Geriye Eğik Seyrek Kanatlı Direkt Akuple Yatay Atışlı Çatı Fanları



MOTOR YALITIM SINIFI	F
MOTOR KORUMA SINIFI	IP55
MOTOR VERİM SINIFI	IE2 - IE3
MOTOR TİPİ	TEFC
MOTOR MARKASI	GAMAK
GÖVDE - PERVANE MALZEMESİ	ST42
GÖVDE KAPLAMASI	Elektrostatik Toz Boya
GÖREV DÖNGÜSÜ	IEC Duty Cycle - S1
ÇALIŞMA SICAKLIĞI	- 20° - + 120° C
STANDARTLAR	IEC - 60335-2-80,ISO190040-1

Cihaz Modeli	Voltaj [V]	Frekans [Hz]	Motor Gücü [kW]	Devir [d/d]	Debi [m3/h]	Fiyat [€]
CTF -310	380	50	0,25	1450	2500	
CTF -355	380	50	0,37	1450	3500	
CTF -400	380	50	0,75	1450	4500	
CTF -450	380	50	1,1	1450	6500	
CTF -500	380	50	1,5	1450	8500	
CTF -560/A	380	50	2,2	1450	12000	
CTF -560/B	380	50	4	1450	15000	
CTF -630	380	50	5,5	1450	20000	

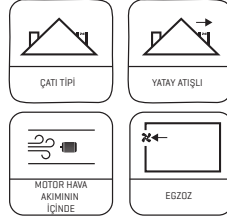


Cihaz Modeli	A	B	C	D	E	F	G	H	L
CTF -355	600	500	438	330	201	35	31	556	230
CTF -400	790	675	603	375	221	35	36	631	250
CTF -450	790	675	603	375	236	35	36	646	290
CTF -500	790	675	603	375	236	35	36	646	315
CTF -560/A	1000	900	828	460	251	35	36	746	365
CTF -560/B	1000	900	828	460	251	35	36	746	365
CTF -630	1000	900	828	222	318	35	36	782	400

*Ölçüler mm cinsindedir.

CTFP - Serisi

Plug Fanlı Geriye Eğik Seyrek Kanatlı Yatay Atışlı Çatı Fanları

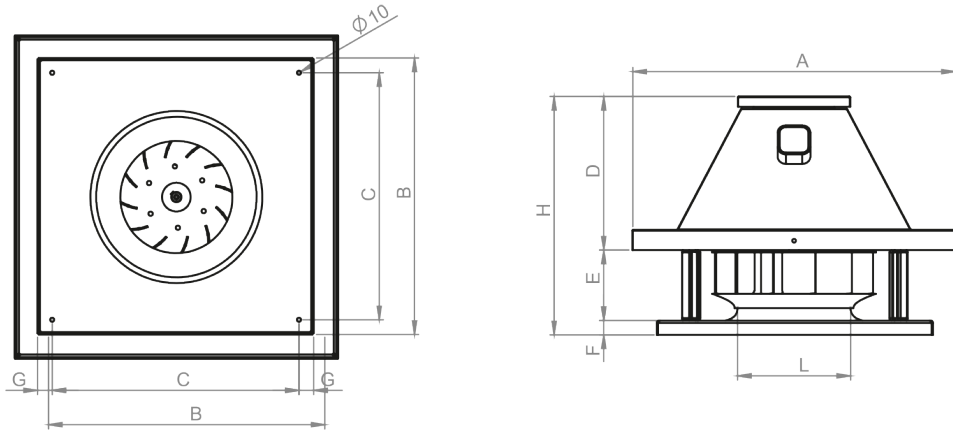


MOTOR YALITIM SINIFI	F
MOTOR KORUMA SINIFI	IP44
GÖVDE - PERVANE MALZEMESİ	GALVANİZE SAC
GÖREV DÖNGÜSÜ	IEC Duty Cycle - SI
ÇALIŞMA SICAKLIĞI	- 30° - + 60°
STANDARTLAR	IEC - 60335-2-80,ISO190040-1

Cihaz Modeli	Voltaj [V]	Frekans [Hz]	Devir [d/d]	Güç [Watt]	Debi [m3/h]	Hız Anahtarı	Fiyat [€]
CTFP -190*	230	50	2500	60	540	SHA-2,5	
CTFP -225*	230	50	2600	135	1100	SHA-2,5	
CTFP -280	230	50	2650	250	1800	SHA-2,5	
CTFP -355	230	50	1400	210	2520	SHA-2,5	
CTFP -400	230	50	1380	430	4100	SHA-2,5	
CTFP -450	230	50	1350	800	6000	SHA-2,5	
CTFP -500**	400	50	1400	1500	9500	-	
CTFP -560**	400	50	1370	2400	11200	-	

*İşaretli Ürünler Pervane Malzemesi Plastik PA66.

**İşaretli Ürünler 400 V(Trifaze) olduğundan Motor Korumasıyla Beraber Çalıştırınız.

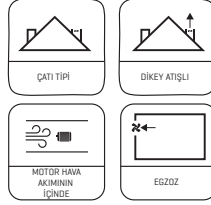


Cihaz Modeli	A	B	C	D	E	F	G	H	L
CTFP -190	450	350	302	145	80	25	24	251	123
CTFP -225	450	350	302	145	113	25	24	285	145
CTFP -280	600	500	438	222	143	35	31	400	180
CTFP -355	600	500	438	222	184	35	31	441	236
CTFP -400	790	675	603	222	213	35	36	470	258
CTFP -450	790	675	603	222	294	35	36	551	291
CTFP -500	900	800	732	222	318	35	36	580	324
CTFP -560	1000	800	828	222	364	35	36	621	388

*Ölçüler mm cinsindedir.

CTFV - Serisi

Plug Fanlı Geriye Eğik Seyrek Kanatlı Dikey Atışlı Çatı Fanları

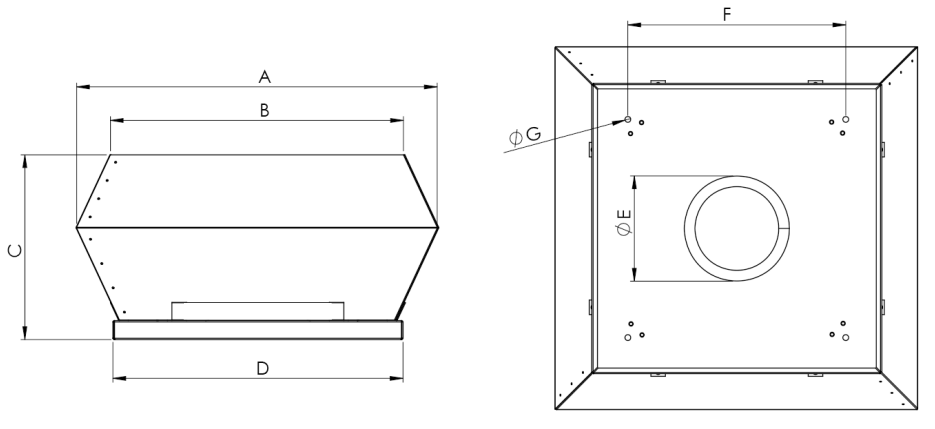


MOTOR YALITIM SINIFI	F
MOTOR KORUMA SINIFI	IP44
GÖVDE MALZEMESİ	GALVANİZE SAC
GÖREV DÖNGÜSÜ	IEC Duty Cycle - S1
ÇALIŞMA SICAKLIĞI	- 30° - + 60°
STANDARTLAR	IEC - 60335-2-80,ISO190040-1

Cihaz Modeli	Voltaj [V]	Frekans [Hz]	Devir [d/d]	Güç [Watt]	Debi [m3/h]	Hız Anahtarı	Fiyat [€]
CTFV -190*	230	50	2500	60	540	SHA-2,5	
CTFV - 225*	230	50	2600	135	1100	SHA-2,5	
CTFV - 280	230	50	2650	250	1800	SHA-2,5	
CTFV -355	230	50	1400	210	2520	SHA-2,5	
CTFV -400	230	50	1380	430	4100	SHA-2,5	
CTFV -450	230	50	1350	800	6000	SHA-2,5	
CTFV -500**	400	50	1400	1500	9500	-	
CTFV -560**	400	50	1370	2400	11200	-	

*İşaretli Ürünler Pervane Malzemesi Plastik PA66 .

**İşaretli Ürünler 400 V[Trifaze] olduğundan Motor Korumasıyla Beraber Çalıştırınız.

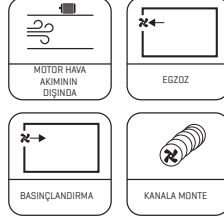


Cihaz Modeli	A	B	C	D	E	F	G
CTFV -190	350	294	190	335	123	245	10
CTFV - 225	350	294	190	335	145	245	10
CTFV - 280	552	450	330	505	180	450	10
CTFV -355	745	607	385	595	236	450	10
CTFV -400	745	607	385	595	258	450	10
CTFV -450	900	742	512	665	291	630	10
CTFV -500	900	741	512	665	324	630	12
CTFV -560	1190	955	595	946	388	740	12

*Ölçüler mm cinsindedir.

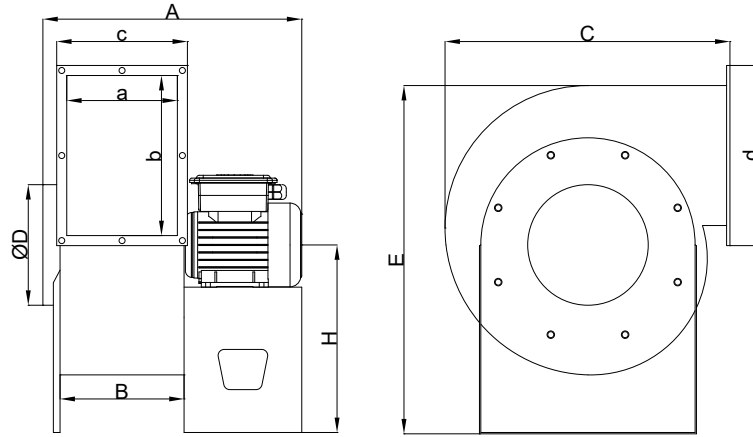
ADR - Serisi

Öne Eğimli Direkt Akuple Seyrek Kanat Alçak Basıncılı Radyal Fanlar



MOTOR YALITIM SINIFI	F
MOTOR KORUMA SINIFI	IP55
GÖVDE MALZEMESİ	ST42
GÖREV DÖNGÜSÜ	IEC Duty Cycle - S1
ÇALIŞMA SICAKLIĞI	- 20° - + 50°
STANDARTLAR	IEC - 60335-2-80,ISO190040-1

Cihaz Modeli	Motor Gücü [kW]	Frekans [Hz]	Voltaj [V]	Devir [d/d]	Debi [m3/h]	Basınç [mmSS]	Fiyat [€]
ADR - 180	0,55	50	380	1450	1500	40	
ADR - 200	0,75	50	380	1450	2500	45	
ADR - 240	1,1	50	380	1450	3500	60	
ADR - 260	1,5	50	380	1450	4500	70	
ADR - 300	2,2	50	380	1450	6000	75	
ADR - 320/A	3	50	380	1450	7000	80	
ADR - 320/B	4	50	380	1450	8000	95	
ADR - 330	5,5	50	380	1450	9000	120	
ADR - 350	7,5	50	380	1450	12000	150	

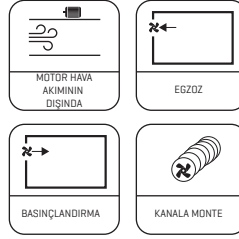


Cihaz Modeli	A	B	C	D	E	H	a	b	c	d
ADR 180	520	165	420	180	520	280	160	200	225	265
ADR 200	540	185	490	200	580	310	180	260	245	325
ADR 240	590	205	550	240	680	355	200	270	265	335
ADR 260	635	225	615	260	715	375	220	290	286	355
ADR 300	655	235	620	300	770	405	230	320	295	385
ADR 320/A	675	255	640	320	775	415	250	320	315	385
ADR 320/B	695	255	740	320	890	475	250	380	315	445
ADR 330	790	285	795	350	930	495	280	440	350	505
ADR 350	860	355	885	400	1180	620	350	540	415	605

*Ölçüler mm cinsindedir.

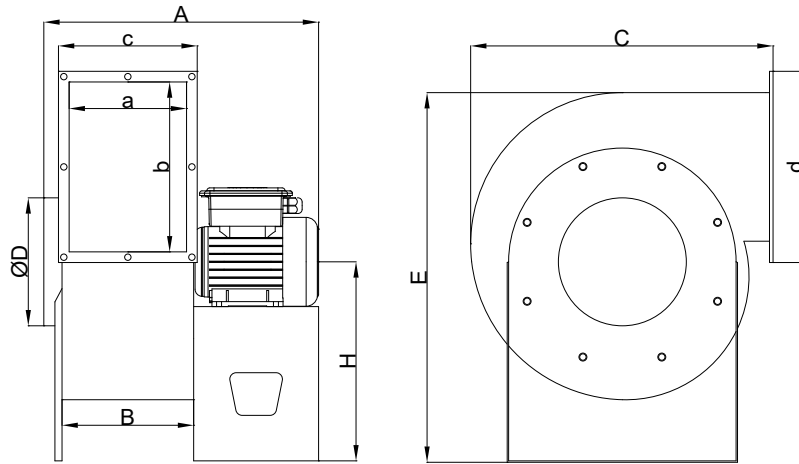
SDR - Serisi

Öne Eğimli Direkt Akuple Sık Kanat Alçak Basıncılı Radyal Fanlar



MOTOR YALITIM SINIFI	F
MOTOR KORUMA SINIFI	IP55
GÖVDE MALZEMESİ	ST42
GÖREV DÖNGÜSÜ	IEC Duty Cycle - S1
ÇALIŞMA SICAKLIĞI	- 20° - + 50°
STANDARTLAR	IEC - 60335-2-80,ISO190040-1

Cihaz Modeli	Motor Gücü [kW]	Frekans [Hz]	Voltaj [V]	Devir [d/d]	Debi [m3/h]	Basınç [mmSS]	Fiyat
SDR - 180	0,55	50	380	1450	2500	40	
SDR - 200	0,75	50	380	1450	2700	65	
SDR - 240	1,1	50	380	1450	3000	80	
SDR - 260	1,5	50	380	1450	4000	85	
SDR - 300	2,2	50	380	1450	5000	110	
SDR - 320/A	3	50	380	1450	7000	110	
SDR - 320/B	4	50	380	1450	8000	130	
SDR - 330	5,5	50	380	1450	9000	150	
SDR - 350	7,5	50	380	1450	12000	150	

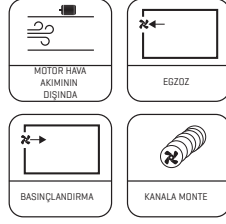
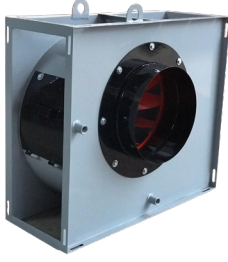


Cihaz Modeli	A	B	C	D	E	H	a	b	c	d
SDR 180	520	165	420	180	520	280	160	200	225	265
SDR 200	540	185	490	200	580	310	180	260	245	325
SDR 240	590	205	550	240	680	355	200	270	265	335
SDR 260	635	225	615	260	715	375	220	290	286	355
SDR 300	655	235	620	300	770	405	230	320	295	385
SDR 320/A	675	255	640	320	775	415	250	320	315	385
SDR 320/B	695	255	740	320	890	475	250	380	315	445
SDR 330	790	285	795	350	930	495	280	440	350	505
SDR 350	860	355	885	400	1180	620	350	540	415	605

*Ölçüler mm cinsindedir.

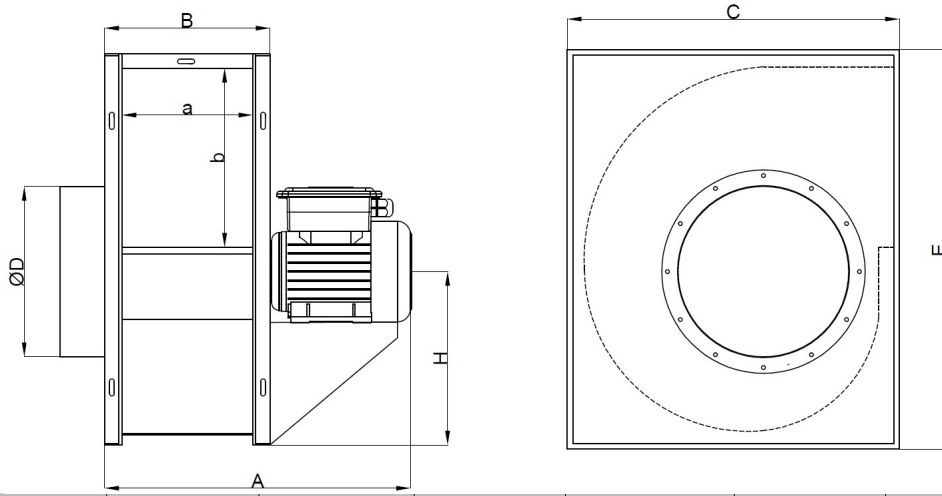
KDR - Serisi

Seyrek Kanat Kare Tipi Radyal Fanlar



MOTOR YALITIM SINIFI	F
MOTOR KORUMA SINIFI	IP55
GÖVDE MALZEMESİ	ST42
GÖREV DÖNGÜSÜ	IEC Duty Cycle - S1
ÇALIŞMA SICAKLIĞI	- 20° - + 50°
STANDARTLAR	IEC - 60335-2-80,ISO190040-1

Cihaz Modeli	Motor Gücü [kW]	Voltaj [V]	Devir [d/d]	Debi [m3/h]	Basınç [mmSS]	Fiyat [€]
KDR - 180	0,55	380	1400	1500	40	
KDR - 200	0,75	380	1400	2500	45	
KDR - 240	1,1	380	1400	3500	60	
KDR - 260	1,5	380	1400	4500	70	
KDR - 300	2,2	380	1400	6000	75	
KDR - 320/A	3	380	1400	6500	80	
KDR - 320/B	4	380	1400	7000	95	
KDR - 330	5,5	380	1400	9000	120	
KDR - 350	7,5	380	1400	12000	150	

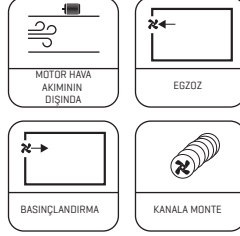


Cihaz Modeli	A	B	C	D	E	H	a	b
KDR-180	420	220	440	180	480	215	160	200
KDR- 200	440	240	510	200	565	270	180	260
KDR-240	510	260	570	240	650	305	200	270
KDR-260	530	280	635	260	680	315	220	290
KDR-300	590	290	640	300	745	345	230	320
KDR-320/A	640	340	765	320	805	350	250	320
KDR-320/B	670	340	765	320	805	350	250	380
KDR-330	720	340	815	350	900	435	280	440
KDR-350	770	410	905	400	1050	460	350	540

*Ölçüler mm cinsindedir.

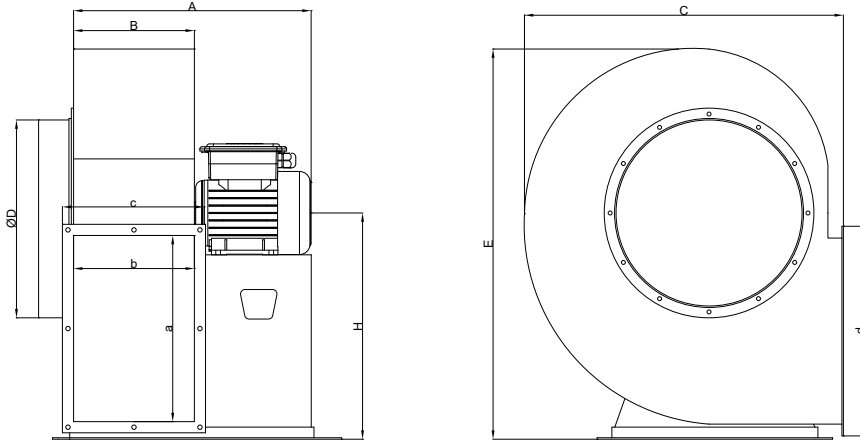
GDR - Serisi

Geriye Eğimli Direkt Akuple Salyangoz Fanlar



MOTOR YALITIM SINIFI	F
MOTOR KORUMA SINIFI	IP55
GÖVDE MALZEMESİ	ST42
GÖREV DÖNGÜSÜ	IEC Duty Cycle - S1
ÇALIŞMA SICAKLIĞI	- 20° - + 50°
STANDARTLAR	IEC - 60335-2-80,ISO190040-1

Cihaz Modeli	Motor Gücü [kW]	Frekans [Hz]	Voltaj [V]	Devir [d/d]	Debi [m3/h]	Basınç [mmSS]	Fiyat [€]
GDR-400	1,1	50	380	1450	4500	40	
GDR-450	1,5	50	380	1450	6000	45	
GDR-500	2,2	50	380	1450	8500	60	
GDR-560	3	50	380	1450	10000	70	
GDR-630/A	4	50	380	1450	14000	75	
GDR-630/B	5,5	50	380	1450	16000	80	
GDR-710/A	7,5	50	380	1450	20000	95	
GDR-710/B	11	50	380	1450	25000	120	
GDR-800/A	15	50	380	1450	35000	70	
GDR-800/B	18,5	50	380	1450	40000	75	
GDR-900/A	30	50	380	1450	50000	90	

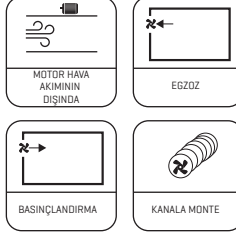
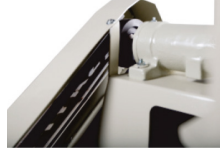
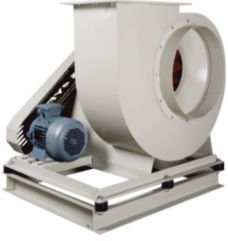


Cihaz Modeli	A	B	C	D	E	H	a	b	c	d
GDR 400	675	275	645	290	725	435	505	275	355	590
GDR 450	750	310	715	300	820	485	570	310	390	650
GDR 500	785	345	790	500	910	540	500	310	425	720
GDR 560	875	385	895	570	1020	605	560	340	465	795
GDR 630	925	435	1000	630	1145	680	630	370	510	880
GDR 710	1045	480	1050	710	1290	765	700	480	560	980
GDR 800	1110	535	1170	800	1460	860	1005	535	615	1090
GDR 900	1230	595	1410	900	1640	970	1130	595	675	1210

*Ölçüler mm cinsindedir.

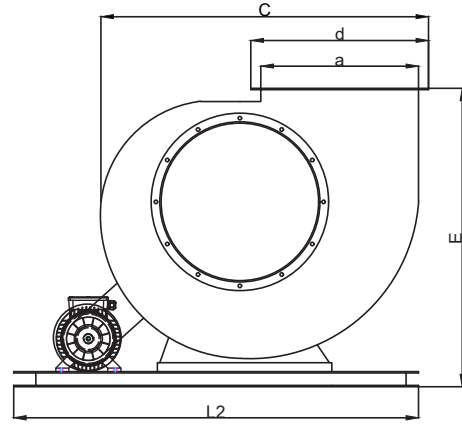
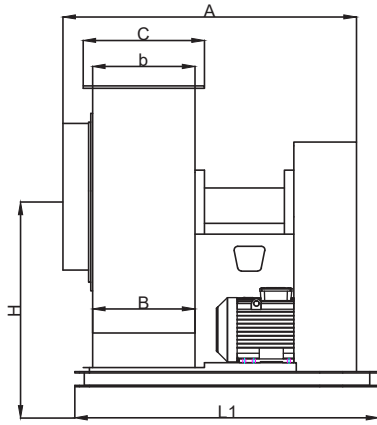
GDRK - Serisi

Geriyeye Eğimli Kayış Kasnaklı Seyrek Kanat Monoblok Yataklı Radyal Fanlar



MOTOR YALITIM SINIFI	F
MOTOR KORUMA SINIFI	IP55
GÖVDE MALZEMESİ	ST42
GÖREV DÖNGÜSÜ	IEC Duty Cycle - S1
ÇALIŞMA SICAKLIĞI	- 20° - + 50°
STANDARTLAR	IEC - 60335-2-80, ISO190040-1

Cihaz Modeli	Motor Gücü [kW]	Frekans [Hz]	Voltaj [V]	Motor Devir [d/d]	FanDevir [d/d]	Debi [m3/h]	Basınç [mmSS]	Fiyat
GDRK-450	1,5	50	380	1450	1450	5000	50	
GDRK-500	2,2	50	380	1450	1373	7500	50	
GDRK - 560	3	50	380	1450	1295	10000	50	
GDRK - 630/A	4	50	380	1450	1125	12500	50	
GDRK - 630/B	5,5	50	380	1450	1270	15000	50	
GDRK - 710/A	7,5	50	380	1450	1190	20000	50	
GDRK - 710/B	11	50	380	1450	1350	25000	50	
GDRK - 710/C	18,5	50	380	1450	1640	30000	50	
GDRK - 800/A	22	50	380	1450	1353	35000	50	
GDRK - 800/B	30	50	380	1450	1540	40000	50	
GDRK - 900	37	50	380	1450	1365	50000	50	

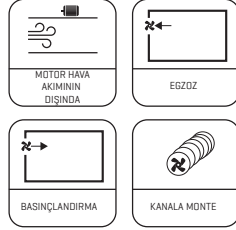


Cihaz Modeli	A	B	C	D	E	H	L1	L2	a	b	c	d
GDRK - 450	1140	310	820	300	810	580	660	1360	570	310	390	650
GDRK - 500	1230	345	910	350	885	635	695	1485	640	345	425	720
GDRK - 560	1335	385	1020	400	990	700	735	1650	715	385	465	795
GDRK - 630	1465	435	1045	630	1095	780	785	1825	800	430	510	880
GDRK - 710	1600	480	1290	710	1145	870	830	1955	900	580	560	980
GDRK - 800	1750	535	1460	800	1265	965	885	2165	1005	535	615	1090
GDRK - 900	1920	595	1640	900	1505	1075	945	2505	1130	595	675	1210

*Ölçüler mm cinsindedir.

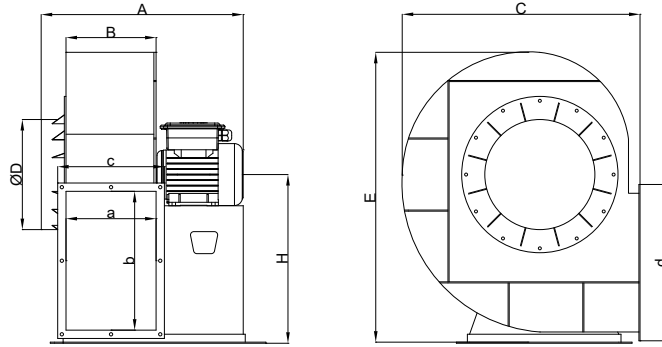
FD Serisi

Geriyeye Eğimli Direkt Akuple Orta Basıncılı Radyal Fanlar



MOTOR YALITIM SINIFI	F
MOTOR KORUMA SINIFI	IP55
GÖVDE MALZEMESİ	ST42
GÖREV DÖNGÜSÜ	IEC Duty Cycle - SI
ÇALIŞMA SICAKLIĞI	- 20° - + 50°
STANDARTLAR	IEC - 60335-2-80,ISO190040-1

Cihaz Modeli	Motor Gücü [kW]	Frekans [Hz]	Voltaj [V]	Devir [d/d]	Debi [m3/h]	Basınç [mmSS]	Fiyat [€]
FD - 280	0,55	50	380	2950	1800	65	
FD - 310/A	0,75	50	380	2950	2100	70	
FD - 310/B	1,1	50	380	2950	2700	75	
FD - 350/A	1,5	50	380	2950	3750	100	
FD - 350/B	2,2	50	380	2950	4500	100	
FD - 400/A	3	50	380	2950	5000	130	
FD - 400/B	4	50	380	2950	6000	130	
FD - 450/A	5,5	50	380	2950	7000	170	
FD - 450/B	7,5	50	380	2950	8500	175	
FD - 500	11	50	380	2950	11000	225	
FD - 560/A	15	50	380	2950	13000	250	
FD - 560/B	18,5	50	380	2950	15000	280	



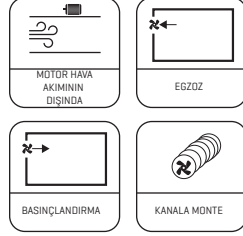
Cihaz Modeli	A	B	C	D	E	H	a	b	c	d
FD 280	480	165	475	205	600	365	160	225	240	305
FD 310	530	185	550	230	670	405	180	250	260	330
FD 350	580-605	205	620	255	750	455	200	280	280	360
FD 400	650-670	230	695	285	830	500	225	315	305	395
FD 450	755	260	780	320	940	565	250	355	330	435
FD 500	940	290	850	360	980	565	280	400	360	480
FD 560	975	325	955	405	1070	695	315	450	395	530
FD 630	860	363	1090	450	1295	775	350	500	430	580

* Ölçüler mm Cinsindedir.

* Toz Ve Talaş Nakil İşlemleri İçin Pervane Açık Kanat Olarak Üretilmektedir.

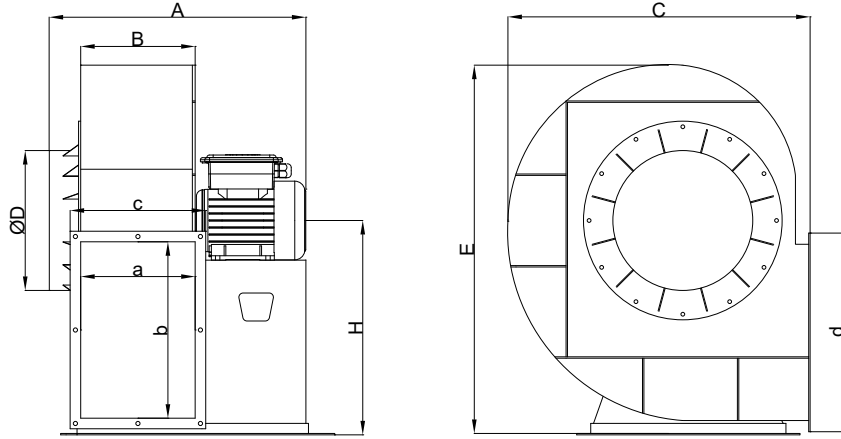
FDL - Serisi

Geriy eđimli Direkt Akuple Orta Basıncılı Radyal Fanlar



MOTOR YALITIM SINIFI	F
MOTOR KORUMA SINIFI	IP55
GÖVDE MALZEMESİ	ST42
GÖREV DÖNGÜSÜ	IEC Duty Cycle - S1
ÇALIŞMA SICAKLIđI	- 20° - + 50°
STANDARTLAR	IEC - 60335-2-80,ISO190040-1

Cihaz Modeli	Motor Gücü [kW]	Frekans [Hz]	Voltaj [V]	Devir [d/d]	Debi [m3/h]	Basınç [mmSS]	Fiyat [€]
FDL - 310	1,1	50	380	2950	2400	120	
FDL - 350	2,2	50	380	2950	3000	175	
FDL - 400	4	50	380	2950	4500	220	
FDL - 450	7,5	50	380	2950	5500	300	
FDL - 500	11	50	380	2950	7000	385	
FDL - 560/A	15	50	380	2950	12000	345	
FDL - 560/B	18,5	50	380	2950	13500	395	



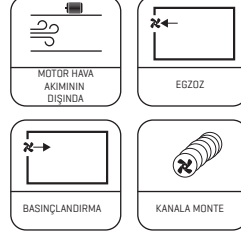
Cihaz Modeli	A	B	C	D	E	H	a	b	c	d
FDL 310	520	180	550	250	673	383	180	250	260	330
FDL 350	610	200	620	280	751	453	200	280	280	360
FDL 400	675	225	695	320	831	500	225	315	305	395
FDL 450	760	250	780	360	983	610	250	355	330	435
FDL 500	940	280	851	400	1032	615	280	400	360	480
FDL 560	965-1015	315	955	450	1158	695	315	450	395	530
FDL 630	795	355	1092	500	1295	775	355	500	435	580
FDL 710	910	400	1234	570	1454	858	400	560	480	640
FDL 800	1100	450	1360	630	1640	860	450	630	530	710

* Ölçüler mm Cinsindedir.

* Toz Ve Talaş Nakil İşlemleri İçin Pervane Açık Kanat Olarak Üretilmektedir.

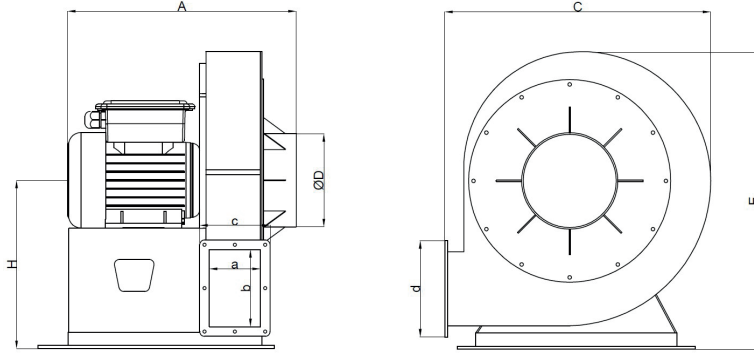
TDR - Serisi

Geriy e Ğimli Direkt Akuple Orta Basıncılı Radyal Fanlar



MOTOR YALITIM SINIFI	F
MOTOR KORUMA SINIFI	IP55
GÖVDE MALZEMESİ	ST42
GÖREV DÖNGÜSÜ	IEC Duty Cycle - S1
ÇALIŐMA SICAKLIĐI	- 20° - + 50°
STANDARTLAR	IEC - 60335-2-80,ISO190040-1

Cihaz Modeli	Motor Gücü [kW]	Frekans [Hz]	Voltaj [V]	Devir [d/d]	Debi [m3/h]	Basınc [mmSS]	Fiyat [€]
TDR - 350	1,1	50	380	2950	1200	200	
TDR - 400/A	1,5	50	380	2950	1500	230	
TDR - 400/B	2,2	50	380	2950	2000	245	
TDR - 450/A	3	50	380	2950	2400	300	
TDR - 450/B	4	50	380	2950	2750	365	
TDR - 500/A	5,5	50	380	2950	3500	415	
TDR - 500/B	7,5	50	380	2950	4200	425	
TDR - 560	11	50	380	2950	5000	550	



Cihaz Modeli	A	B	C	D	E	H	a	b	c	d
TDR - 350	475	121	530	185	600	345	160	115	240	195
TDR - 400	515-540	131	590	200	670	385	180	125	260	205
TDR - 400	515-540	131	590	200	670	385	180	125	260	205
TDR - 450	565-590	148	665	230	730	415	200	140	280	220
TDR - 500	655	168	740	250	813	462	225	160	305	240
TDR - 560	840	168	820	290	915	515	230	160	310	240

* Ölçüler mm Cinsindedir.

* Toz Ve Talaő Nakil İşlemleri İçin Pervane Açık Kanat Olarak Üretilmektedir.

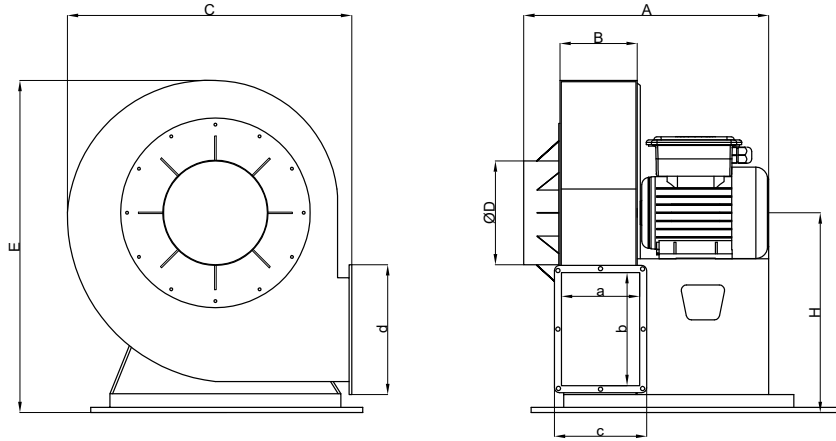
TDL - Serisi

GeriyE Eğimli Direkt Akuple Orta Basıncılı Radyal Fanlar



MOTOR YALITIM SINIFI	F
MOTOR KORUMA SINIFI	IP55
GÖVDE MALZEMESİ	ST42
GÖREV DÖNGÜSÜ	IEC Duty Cycle - SI
ÇALIŞMA SICAKLIĞI	- 20° - + 50°
STANDARTLAR	IEC - 60335-2-80, ISO190040-1

Cihaz Modeli	Motor Gücü [kW]	Frekans [Hz]	Voltaj [V]	Devir [d/d]	Debi [m ³ /h]	Basınç [mmSS]	Fiyat [€]
TDL - 400	3	50	380	2950	5000	140	
TDL - 450	5,5	50	380	2950	7000	180	
TDL - 500	11	50	380	2950	9500	200	
TDL - 560	15	50	380	2950	12000	310	
TDL - 630	22	50	380	2950	14000	420	



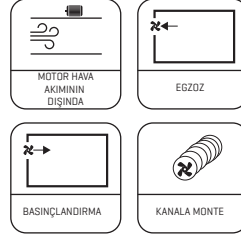
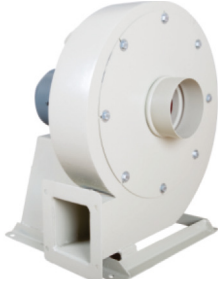
Cihaz Modeli	A	B	C	D	E	H	a	b	c	d
TDL - 400	610	186	700	255	840	510	180	250	260	330
TDL - 450	710	206	780	285	935	565	200	280	280	360
TDL - 500	890	233	850	320	1035	625	225	315	305	395
TDL - 560	910	258	835	360	1145	695	250	355	330	435
TDL - 630	1080	288	1085	405	1220	775	280	400	360	480

* Ölçüler mm Cinsindedir.

* Toz Ve Talaş Nakil İşlemleri İçin Pervane Açık Kanat Olarak Üretilmektedir.

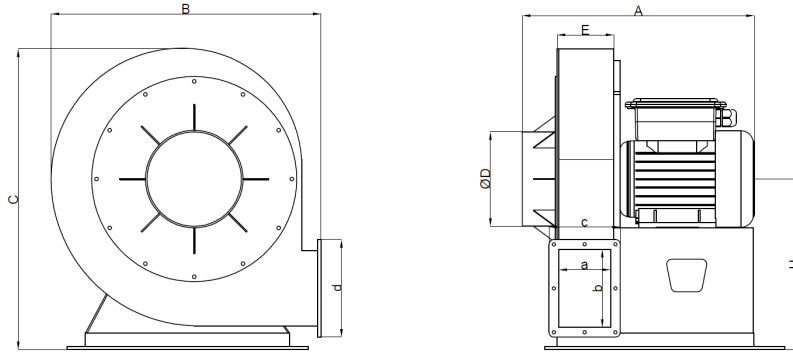
ODR - Serisi

GeriyE Eğimli Direkt Akuple Orta Basıncılı Radyal Fanlar



MOTOR YALITIM SINIFI	F
MOTOR KORUMA SINIFI	IP55
GÖVDE MALZEMESİ	ST42
GÖREV DÖNGÜSÜ	IEC Duty Cycle - S1
ÇALIŞMA SICAKLIĞI	- 20° - + 50°
STANDARTLAR	IEC - 60335-2-80,ISO190040-1

Cihaz Modeli	Motor Gücü [kW]	Frekans [Hz]	Voltaj [V]	Devir [d/d]	Debi [m3/h]	Basınç [mmSS]	Fiyat [€]
ODR-100	0,55	50	380	2950	950	130	
ODR-120/A	0,75	50	380	2950	1000	200	
ODR-120/B	1,1	50	380	2950	1300	300	
ODR-150/A	1,5	50	380	2950	1600	350	
ODR-150/B	2,2	50	380	2950	1900	400	
ODR-150/C	3	50	380	2950	2200	450	
ODR-150/D	4	50	380	2950	2500	500	
ODR-150/E	5,5	50	380	2950	3000	600	
ODR-180	7,5	50	380	-	4000	725	

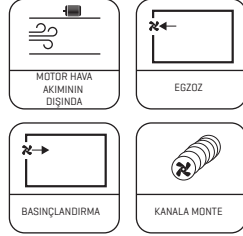


Cihaz Modeli	A	B	C	D	E	H	a	b	c	d
ODR 100	340	380	450	100	100	275	90	100	170	180
ODR 120/A	365	435	530	120	100	320	100	100	180	180
ODR 120/B	375	500	585	120	100	350	100	100	180	180
ODR 150/A	410	510	615	150	120	370	120	120	200	200
ODR 150/B	450	565	665	150	120	395	130	120	210	200
ODR 150/C	490	590	690	150	150	410	130	150	210	230
ODR 150/D	525	675	785	150	150	445	150	150	230	230
ODR 150/E	560	700	810	150	150	410	200	150	280	230
ODR 180	560	700	810	180	150	450	200	150	280	230

*Ölçüler mm cinsindedir.

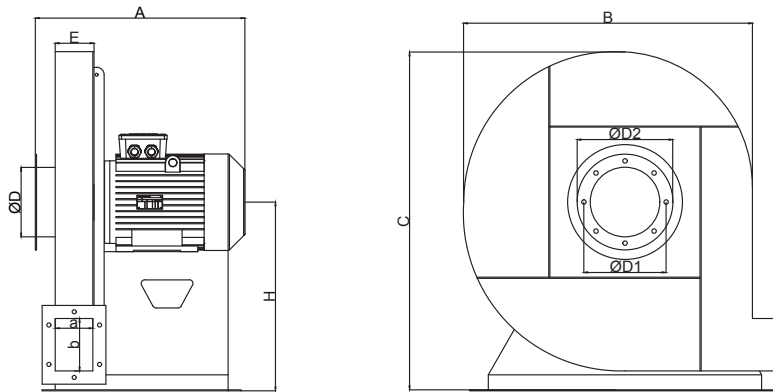
TFC - Serisi

Geriy eđimli Direkt Akuple Y¼ksek Basıncılı Radyal Fanlar



MOTOR YALITIM SINIFI	F
MOTOR KORUMA SINIFI	IP55
GVDE MALZEMESİ	ST42
GREV DNGS	IEC Duty Cycle - S1
ALIřMA SICAKLIđI	- 20° - + 50°
STANDARTLAR	IEC - 60335-2-80,ISO190040-1

Cihaz Modeli	Motor G¼c¼ [kW]	Frekans [Hz]	Voltaj [V]	Devir [d/d]	Debi [m3/h]	Basınc [mmSS]	Fiyat []
TFC - 400	0,75	50	380	2950	600	270	
TFC - 450	1,1	50	380	2950	600	350	
TFC - 500	1,5	50	380	2950	650	450	
TFC - 560	2,2	50	380	2950	750	500	
TFC - 630	3	50	380	2950	850	700	
TFC - 710/A	4	50	380	2950	1000	910	
TFC - 710/B	5,5	50	380	2950	1100	1000	
TFC - 800	7,5	50	380	2950	1100	1250	
TFC - 900	11	50	380	2950	1500	1435	

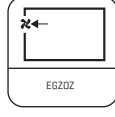


Cihaz Modeli	A	B	C	QD	QD1	QD2	E	H	a	d
TFC-400	330	520	560	145	182	220	84	300	63	90
TFC-450	330	620	670	145	182	220	84	355	63	90
TFC-500	370	620	670	145	182	220	84	355	63	90
TFC-560	390	730	790	165	200	240	92	425	71	100
TFC-630	460	730	790	165	200	240	92	425	71	100
TFC-710/A	460	825	890	165	200	240	92	475	71	100
TFC-710/B	520	825	890	165	200	240	92	475	71	100
TFC-800	520	920	990	165	200	240	100	530	71	100
TFC-900	680	1100	1180	185	219	260	112	630	80	112

*l¼ler mm cinsindedir.

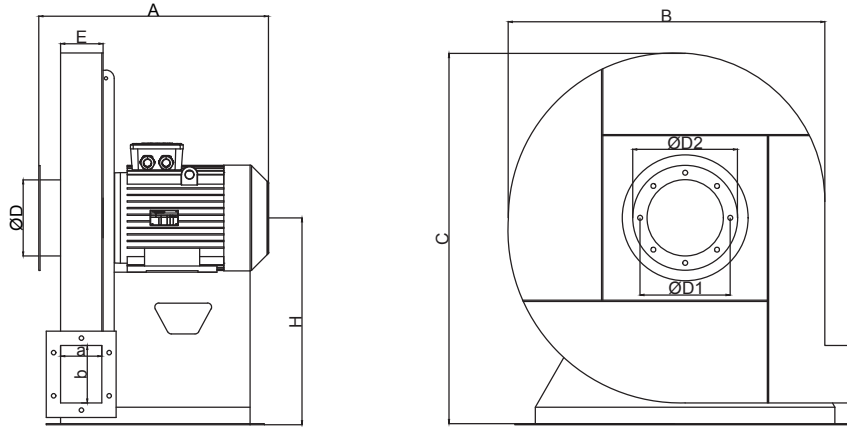
TFL - Serisi

GeriyE Eğimli Direkt Akuple Yüksek Basınçlı Radyal Fanlar



MOTOR YALITIM SINIFI	F
MOTOR KORUMA SINIFI	IP44
GÖVDE MALZEMESİ	GALVANİZE SAC
GÖREV DÖNGÜSÜ	IEC Duty Cycle - S1
ÇALIŞMA SICAKLIĞI	- 10° - + 40°
STANDARTLAR	IEC - 60335-2-80,ISO190040-1

Cihaz Modeli	Motor Gücü [kW]	Frekans [Hz]	Voltaj [V]	Devir [d/d]	Debi [m3/h]	Basınç [mmSS]	Fiyat [€]
TFL - 500/A	5,5	50	380	2950	3000	400	
TFL - 500/B	7,5	50	380	2950	3500	400	
TFL - 560	11	50	380	2950	4250	540	
TFL - 630	15	50	380	2950	5000	745	
TFL- 710	18,5	50	380	2950	6000	900	

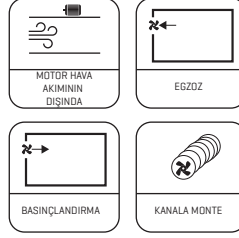


Cihaz Modeli	A	B	C	QD	QD1	QD2	E	H	a	d
TFL-500/A	570	735	800	200	240	280	130	450	130	180
TFL - 500/B	570	735	800	200	240	280	130	450	130	180
TFL - 560	730	830	900	230	270	310	140	500	140	200
TFL - 630	750	930	1000	260	300	340	180	560	180	230
TFL- 710	780	1050	1120	290	330	370	180	630	180	250

*Ölçüler mm cinsindedir.

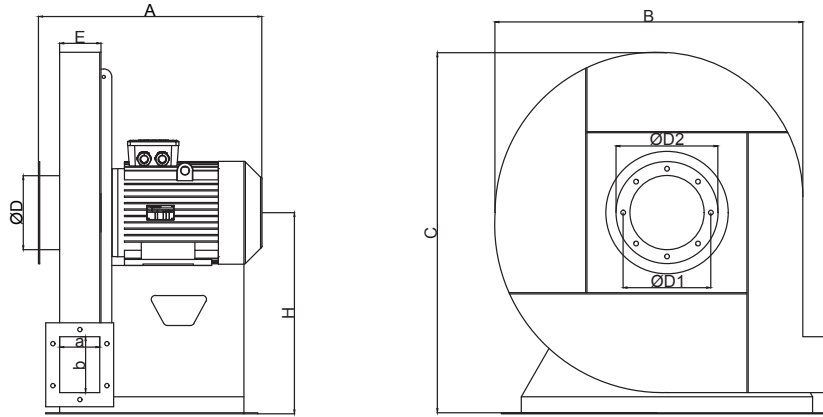
TFR - Serisi

GeriyE Eğimli Direkt Akuple Yüksek Basıncılı Radyal Fanlar



MOTOR YALITIM SINIFI	F
MOTOR KORUMA SINIFI	IP55
GÖVDE MALZEMESİ	ST42
GÖREV DÖNGÜSÜ	IEC Duty Cycle - S1
ÇALIŞMA SICAKLIĞI	- 20° - + 50°
STANDARTLAR	IEC - 60335-2-80,ISO190040-1

Cihaz Modeli	Motor Gücü [kW]	Frekans [Hz]	Voltaj [V]	Devir [d/d]	Debi [m3/h]	Basınç [mmSS]	Fiyat
TFR - 500/A	2,2	50	380	2950	1100	470	
TFR - 500/B	3	50	380	2950	1500	430	
TFR - 560/A	4	50	380	2950	1800	600	
TFR - 560/B	5,5	50	380	2950	2100	570	
TFR - 630	7,5	50	380	2950	2750	650	
TFR - 710/A	11	50	380	2950	2750	905	
TFR - 710/B	15	50	380	2950	3750	800	
TFR - 800	18,5	50	380	2950	4000	1160	

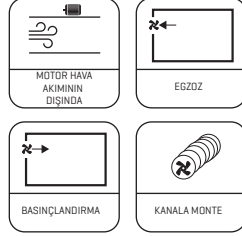
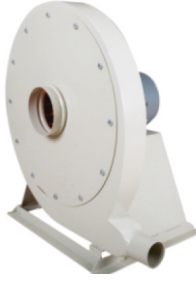


Cihaz Modeli	A	B	C	QD	QD1	QD2	E	H	a	d
TFR - 500/A	405	735	800	160	200	240	125	450	90	125
TFR - 500/B	475	735	800	160	200	240	125	450	90	125
TFR - 560/A	490	830	900	175	219	260	130	500	100	140
TFR - 560/B	490	830	900	175	219	260	130	500	100	140
TFR - 630	565	900	1000	190	241	280	142	560	112	160
TFR - 710/A	725	1010	1120	210	265	305	160	630	125	180
TFR - 710/B	725	1010	1120	210	265	305	160	630	125	180
TFR - 800	740	1120	1250	240	292	330	180	710	140	200

*Ölçüler mm cinsindedir.

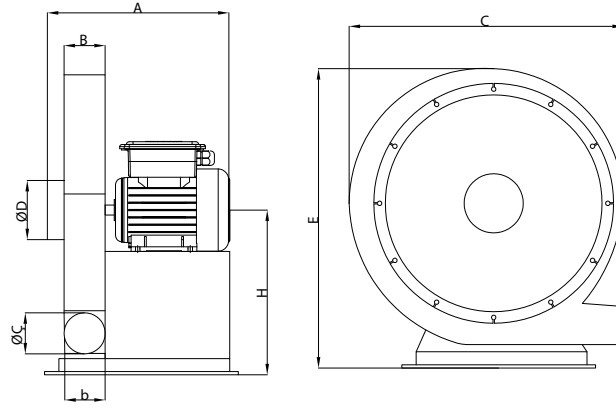
YDR - Serisi

Geriye Eğimli Direkt Akuple Yüksek Basıncılı Radyal Fanlar



MOTOR YALITIM SINIFI	F
MOTOR KORUMA SINIFI	IP55
GÖVDE MALZEMESİ	ST42
GÖREV DÖNGÜSÜ	IEC Duty Cycle - S1
ÇALIŞMA SICAKLIĞI	- 10° - + 40°
STANDARTLAR	IEC - 60335-2-80, ISO190040-1

Cihaz Modeli	Motor Gücü [kW]	Frekans [Hz]	Voltaj [V]	Devir [d/d]	Debi [m ³ /h]	Basınç [mmSS]	Fiyat [€]
YDR - 130/A	0,55	50	380	2950	350	250	
YDR - 130/B	0,75	50	380	2950	400	300	
YDR - 130/C	1,1	50	380	2950	450	400	
YDR - 130/D	1,5	50	380	2950	500	450	
YDR - 150/A	2,2	50	380	2950	600	500	
YDR - 150/B	3	50	380	2950	1000	700	
YDR - 150/C	4	50	380	2950	1200	800	
YDR - 150/D	5,5	50	380	2950	1300	900	
YDR - 180	7,5	50	380	2950	1500	1000	



Cihaz Modeli	A	B	C	D	E	H	a	b	c	d
YDR 130/A	285	60	515	100	585	335	60	100	170	180
YDR 130/B	285	60	515	120	585	335	60	100	180	180
YDR 130/C	310	60	525	120	590	335	60	100	180	180
YDR 130/D	310	65	625	150	690	365	60	120	200	200
YDR 150/A	265	65	625	150	690	365	60	120	210	200
YDR 150/B	365	65	625	150	690	365	70	150	210	230
YDR 150/C	400	70	680	150	765	425	70	150	230	230
YDR 150/D	445	75	725	150	780	415	80	150	280	230
YDR 180	435	90	835	180	880	450	90	150	280	230

*Ölçüler mm cinsindedir.

Frekans Konvertörü

Fan Uygulamaları İçin Geliştirilmiş Koruma ve İlave Enerji Tasarufu Fonksiyonları
Programlanabilir Lojik Kontrolörlü Motor Hız Kontrol Cihazı



Teknik Özellikler

- * %150 Aşırı Yükleme Kapasitesi
- * Dahili 1.Çevre Rfı/Emc Filtreli
- * Vvc+ Vektör Kontrollü
- * Akıllı Isı Dağılımı İle Uzun Ömürlü Çalışma
- * Otomatik Enerji Optimizasyonu (Aeo)
- * Tak Çalıştır Özelliği İle Minimum Devreye Alma Süresi

Cihaz Modeli	Güç [kW]	Giriş Voltaj [V]	Çıkış Voltaj [V]	Çıkış Akımı	Cihaz Boyutları	Fiyat [€]
132F0001	0,18	1/220	3/220	1,2	150x70x148	
132F0002	0,37	1/220	3/220	2,2	150x70x148	
132F0003	0,75	1/220	3/220	4,2	150x70x148	
132F0005	1,5	1/220	3/220	6,8	180x75x168	
132F0007	2,2	1/220	3/220	9,6	180x80x170	
132F0017	0,37	3/380	3/380	1,2	150x70x148	
132F0018	0,75	3/380	3/380	2,2	150x70x148	
132F0020	1,5	3/380	3/380	3,7	180x75x168	
132F0022	2,2	3/380	3/380	5,3	180x75x168	
132F0024	3	3/380	3/380	7,2	220x90x194	
132F0026	4	3/380	3/380	9	220x90x194	
132F0028	5,5	3/380	3/380	12	220x90x194	
132F0030	7,5	3/380	3/380	15,5	220x90x194	
132F0058	11	3/380	3/380	24	292x125x241	
132F0059	15	3/380	3/380	32	292x125x241	
132F0060	18,5	3/380	3/380	37,5	335x165x248	
132F0061	22	3/380	3/380	44	335x165x248	
131L9875	30	3/380	3/380	61	518x239x242	
131L9883	37	3/380	3/380	73	518x239x242	
131L9891	45	3/380	3/380	90	518x239x242	
131L9899	55	3/380	3/380	106	550x313x335	
131L9907	75	3/380	3/380	147	550x313x335	
3390	90	3/380	3/380	177	660x375x335	

* 220 Volt Cihazların Girişleri 1/220V Ac Olup , Çıkışları 3/220V Ac (Trifazedir) Dolayısı İle Motorların Üçgen Bağlanması Gerekmetedir.

Elektrik Panosu

Fan Uygulamaları için Geliştirilmiş Polyester Elektrik Panosu



Çalışma Sıcaklığı -400c + 700c
Kapak Açılma Açısı 2100
Yangın Dayanımı B2
Uv Dayanımı

Cihaz Modeli	Güç [kW]	Bağlantı Şekli	Voltaj	Fiyat [€]
SAY-E-10	0,75	Direkt Yol Verme	380	
SAY-E-15	1,1	Direkt Yol Verme	380	
SAY-E-20	1,5	Direkt Yol Verme	380	
SAY-E-25	2,2	Direkt Yol Verme	380	
SAY-E-30	3	Direkt Yol Verme	380	
SAY-E-35	4	Direkt Yol Verme	380	
SAY-E-40	5,5	Yıldız Üçgen	380	
SAY-E-45	7,5	Yıldız Üçgen	380	
SAY-E-50	11	Yıldız Üçgen	380	
SAY-E-55	15	Yıldız Üçgen	380	
SAY-E-60	18,5	Yıldız Üçgen	380	
SAY-E-65	22	Yıldız Üçgen	380	
SAY-E-70	30	Yıldız Üçgen	380	
SAY-E-75	37	Yıldız Üçgen	380	
SAY-E-80	45	Yıldız Üçgen	380	

* Sayfan Say-E Serisi Polyester Elektrik Panoları 15 Model Üretilmektedir.

* Panolar Ip 65 Sınıfıdır.

* Genel Özellikler ; Isı Yalıtımı Dış İklim Koşullarında Dayanıklılık, Darbe Dayanımı Elektrik Arklarına Ve Kısa Devrelere Dayanıklılık Vb.

* Teknik Özellikler ; Faz Koruma Rölesi

3 Faz Lambası

Her Motora Ayrı Motor Koruma Termiği

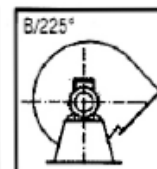
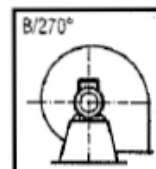
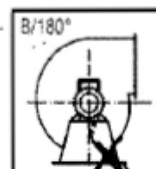
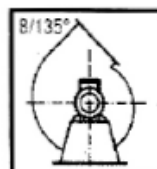
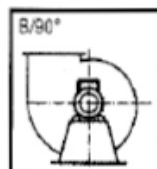
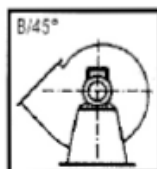
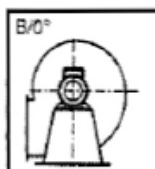
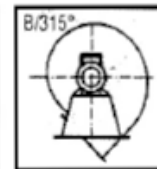
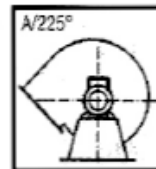
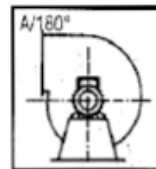
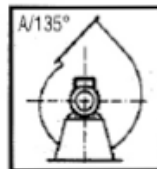
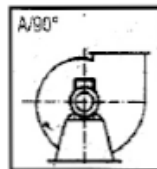
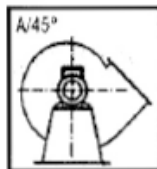
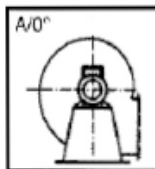
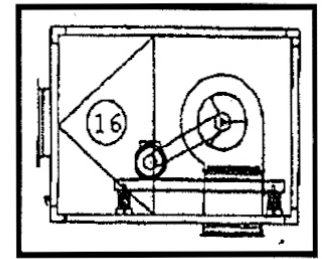
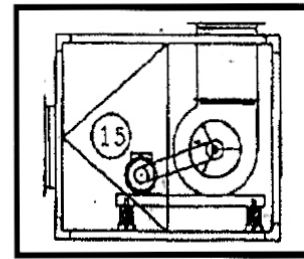
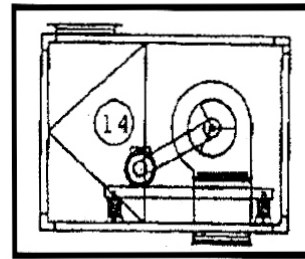
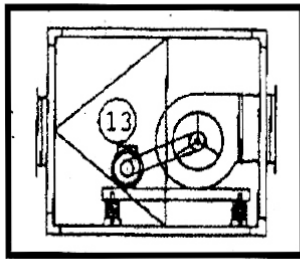
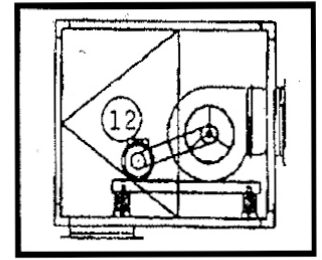
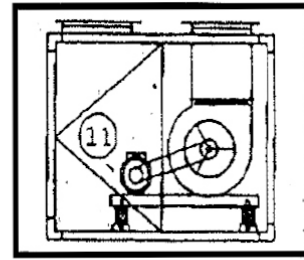
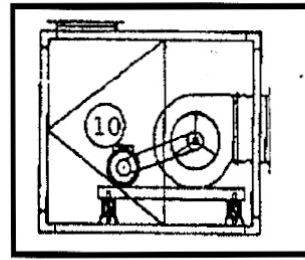
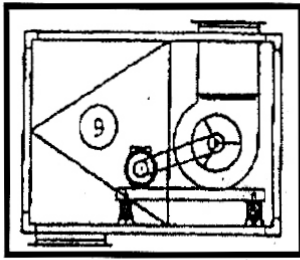
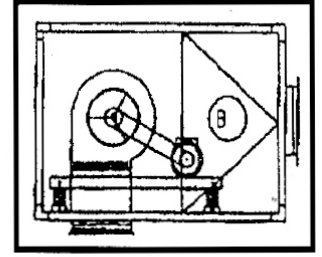
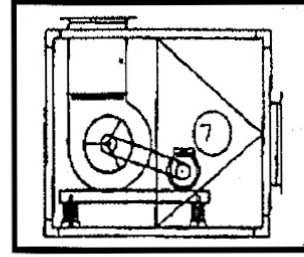
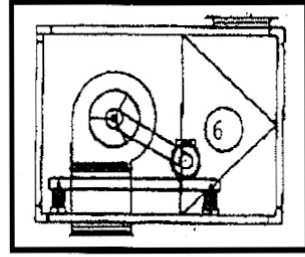
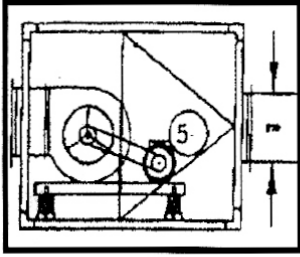
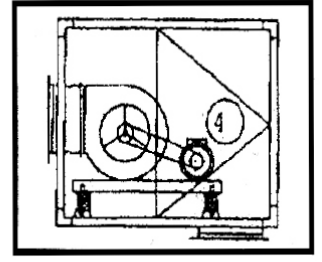
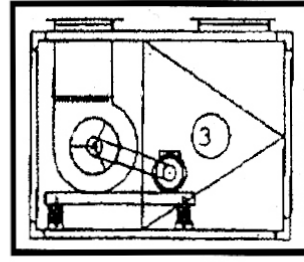
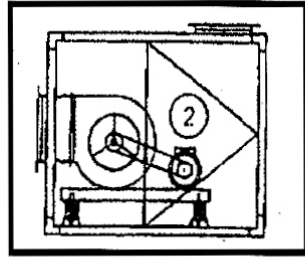
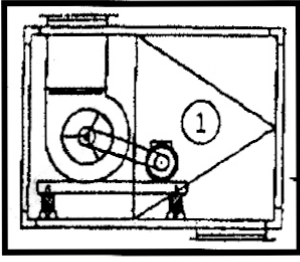
Çalışıyor Ve Arıza Lambası

Pano Üstü Pako İle Kontrol

Haftalık Program [Opsiyonel]

Notlar

A series of horizontal dashed lines for writing notes.



H

H1

H2

